

MD 616

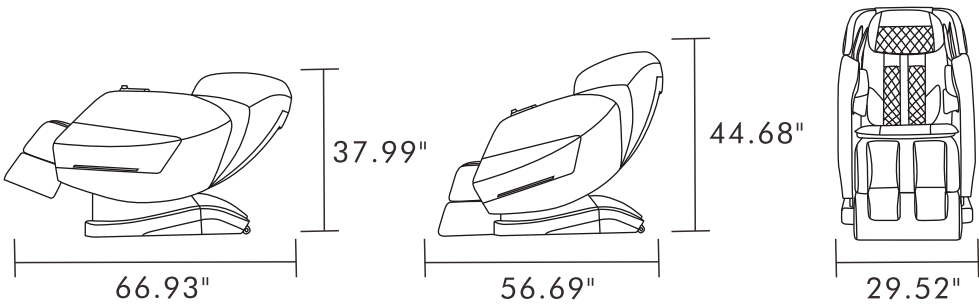
Manual Book

CE, CB

ISO9001:2015, ISO14001:2015

PRODUCT SPECIFICATION

Dimensions



Specification

Name of Product: Advanced Massage Chair
Voltage : AC 110-120V, 50/60Hz
Power: 160W

CONTENTPage

■ Content	1
■ Important Safety Instructions	2-3
■ Name of Components	4-5
■ Remote Control Instructions	6-7
■ Shortcut Key	8
■ Preparation Before Use	9
■ Trouble Shooting	10
■ Voice Control Function	11
■ Product Specification	12

IMPORTANT SAFETY INSTRUCTION

Please read details in this booklet carefully and pay special attention to the "Important safety instructions". To ensure proper use please keep this booklet for your reference.

(All information presented is as accurate as possible, but is subject to change without notice, please check with the product. Our company reserves the right of final explanation.)

WORK ENVIRONMENT

- Please do not use it in a moist environment to avoid the danger of an electric shock.
 - Please do not use it in the heavy-dusty or caustic environment in order to avoid mechanical failure or eroding.
 - Please do not use your chair if the room temperature is higher than 40°C.
 - Please do not leave it outdoors.
Please do not expose this machine to strong light, ultraviolet rays, sunshine or close to a heater.
 - Please use your chair where there is enough space and good ventilation.
Please use and place it on the level of the ground. This massage chair is intended for household use only.
- Caution:**
Please do not use the machine immediately after the surrounding temperature changes sharply. Wait 30 minutes for the machine to reach the room temperature, then use it.

PEOPLE WHO ARE NOT SUITABLE TO USE THIS PRODUCT

- If you are pregnant or have any health issues please consult your medical practitioner before using your chair.
- ⚠ WARNINGS:**
- This appliance is not intended for use by persons (including children) with reduced physical, sensory or mental capabilities, or lack of experience and knowledge, unless they have been given supervision or instruction concerning use of the appliance by a person responsible for their safety.
 - Children should be supervised to ensure that they do not play with the appliance.
 - Service and Repairs must be carried out by a suitably qualified person.
 - If the power line is damaged, it must be replaced by the manufacturer or its service agent with similar qualifications to avoid danger.

SAFETY ITEMS

- Please check your voltage is suitable before use.
- Please do not plug/unplug the power plug with wet hands.
- To avoid electric shock or short circuit do not spill liquid on the machine.
- Importantly, do not use this chair if some parts of your seat have moved.
- Please do not use in conjunction with other medical instruments or an electro-thermal blanket to avoid injury or inefficacy.
- Please do not use your chair within an hour after having a meal.
- Please do not place valuable things or heavy objects on this product to avoid mechanical failure and damage.
- Please check that there is no person, pets and obstacles near the working massage chair to avoid any injury or mechanical problems.
- Please never put hands or feet into the slots to avoid any injury.

VOICE CONTROL FUNCTION

NO.	ASK	ANSWER	NO.	ASK	ANSWER
1	Hello robot	Hello, Master	14	Tap massage	Ok, Tap massage
2	Turn on massage/ Start massage	Ok, Turn on the massage	15	Kneading massage	Ok, Kneading massage
3	Turn off massage/ Stop massage	Ok, Turn off the massage	16	Knocking massage	Ok, Knocking massage
4	Refreshing program	Ok, Refreshing Program	17	Finger Pressure massage	Ok, Finger Pressure massage
5	Comfort program	Ok, Comfort Program	18	Kneading and knocking	Ok, Kneading and knocking
6	Sleeping program	Ok, Sleeping program	19	Turn on Air Pressure	Ok, Turn on Air Pressure
7	Recovery program	Ok, Recovery program	20	Turn off Air Pressure	Ok, Turn off Air Pressure
8	Neck & shoulder Program	Ok, Neck & shoulder Program	21	Turn on foot scraping	Ok, Turn on foot scraping
9	Back & waist Program	Ok, Back & waist Program	22	Turn off foot scraping	Ok, Turn off foot scraping
10	Stretching program	Ok, Stretching program	23	Turn on heating	Ok, Turn on heating
11	Sport program	Ok, Sport program	24	Turn off heating	Ok, Turn off heating
12	Quick program	Ok, Quick program	25	Zero gravity	Ok, Zero gravity
13	Deep program	Ok, Deep program			

Problem	Problem	Solution
Can't start the chair	<ul style="list-style-type: none"> * Please check the power plug is connected with socket * Please check it is switch on * Please check the fuse 	<ul style="list-style-type: none"> • Please check the socket and make sure it works effectively • Please turn on the chair • Please change the fuse if it has melted
The remote control doesn't work properly	<ul style="list-style-type: none"> * Please check the plug is connected to the PCB box * Please check if it is connected properly 	<ul style="list-style-type: none"> • Please insert the plug firmly into the socket. • Please check and make sure you have a proper connection.
The mechanical massage hands don't work	<ul style="list-style-type: none"> * Please check whether the chair is on/off * Please check if the time is up * The chair may have been working for too long causing the temperature protector to automatically turn the power off. 	<ul style="list-style-type: none"> • Please turn on the chair • Please use it after half an hour's rest
The backrest and legrest cannot incline normally	<ul style="list-style-type: none"> * The backrest or legrest may have an interference with an obstruction * Please check the power cord for a disconnection 	<ul style="list-style-type: none"> • Please move chair from obstruction • Please insert the plug firmly into socket.
The shoulder position cannot be detected		<ul style="list-style-type: none"> • Please move your back to mechanical massage hands, head close to the pillow
The massage function suddenly stops	<ul style="list-style-type: none"> * Power is off * The time is up 	<ul style="list-style-type: none"> • Please turn on the power • Please use it after an hour of rest
The massage motion suddenly stops, causing the mechanical massage hands to return to top position	<ul style="list-style-type: none"> * Mechanical failure because of excess weight * The time is up 	<ul style="list-style-type: none"> • Please contact us for further information • Please use it after half an hour of rest
The buttons on the remote control are not working correctly		<ul style="list-style-type: none"> • Please cut off the power and restart

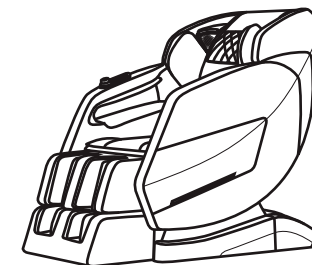
- Please check and make sure all the parts are in good condition and are firmly connected before use.
 - Please cut off the power immediately if water or other liquid has been spilt on the remote control or the PCB box of massage chair.
 - Please cut off the power immediately when the covering cloth is broken (i.e. the built-in mechanism is exposed) and contact us for information.
 - Please cut off the power immediately if any abnormal phenomenon occurs, and contact us for information.
 - The time function can only stop the mechanical operation of your chair, please remember to turn off the power switch.
 - During a storm please turn off the power switch and disconnect the power line.
 - Please do not press, twist or pull the electrical wire forcibly.
- If damage occurs, contact us for inspection/repair information.
- Please do not use this product if the sockets are loose.

INSTALLATION AND MAINTENANCE

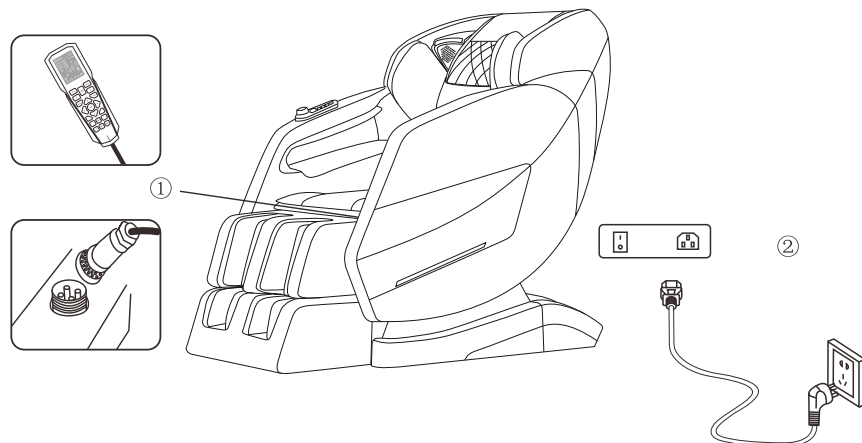
- Please don't disassemble this product or touch the inner parts to avoid injury.
- Only our service agents can repair this product under warranty, please do not disassemble and repair this product by yourself

CAUTION

- Please locate the backbone at the center of the chair, otherwise it may cause discomfort.
- Please do not try to control the massage rollers to massage your head. That might not very comfortable.
- Please ensure that the body is located in the right position while the massager is working. If the massage rollers go down, do not try to force them to return.
- Please be careful not to fall asleep during your massage.
- If sickness or pain is felt during use, stop using the massager and consult a doctor immediately.
- Please do not use the massage chair more than 30 minutes each time.



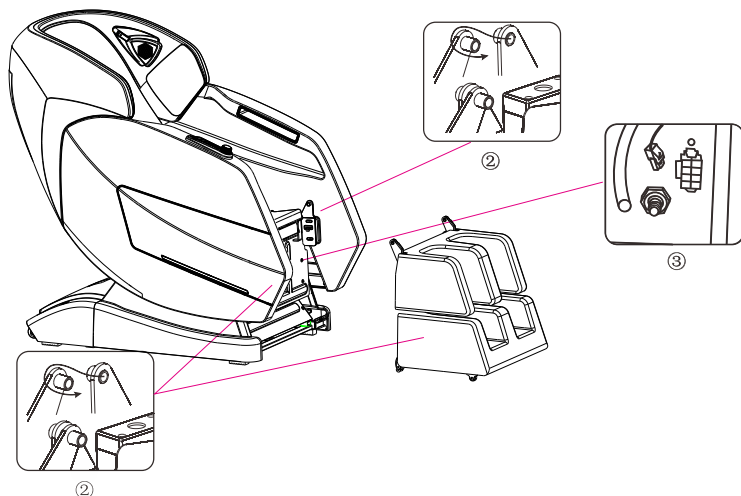
Remote control guidance



- 1/ Connect the remote control in position 2.
- 2/ Connect the Power.

The legrest assembly

- 1/ Connect the air hose and cable in position 3
- 2/ Put the Legrest in position 2 and Lock up.

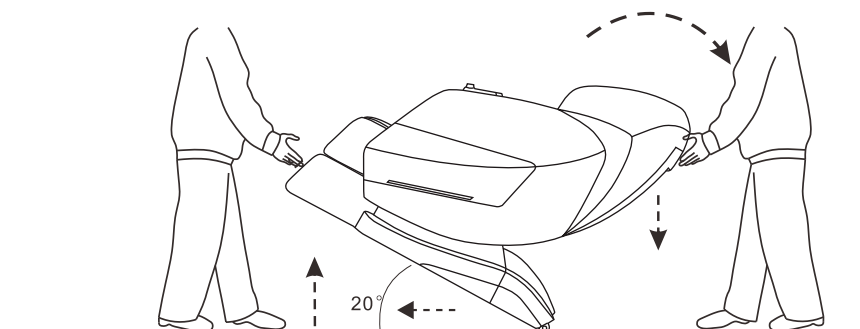


ATTENTION

Please place this product on the level ground
As this product is very heavy, we suggest using carpet to avoid damaging the floor.
Take all products parts and accessory case from the package.

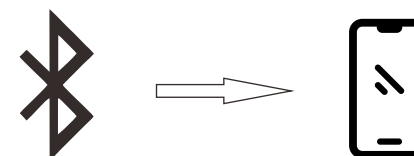
1.Movement

a.Short distance movement: push the backrest backward until you are balancing the machine on the cast/wheels, to move the massage chair.



2. Blue-Tooth Connection

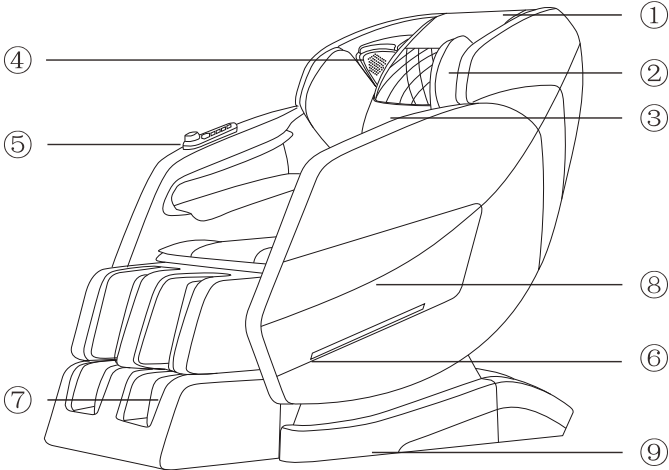
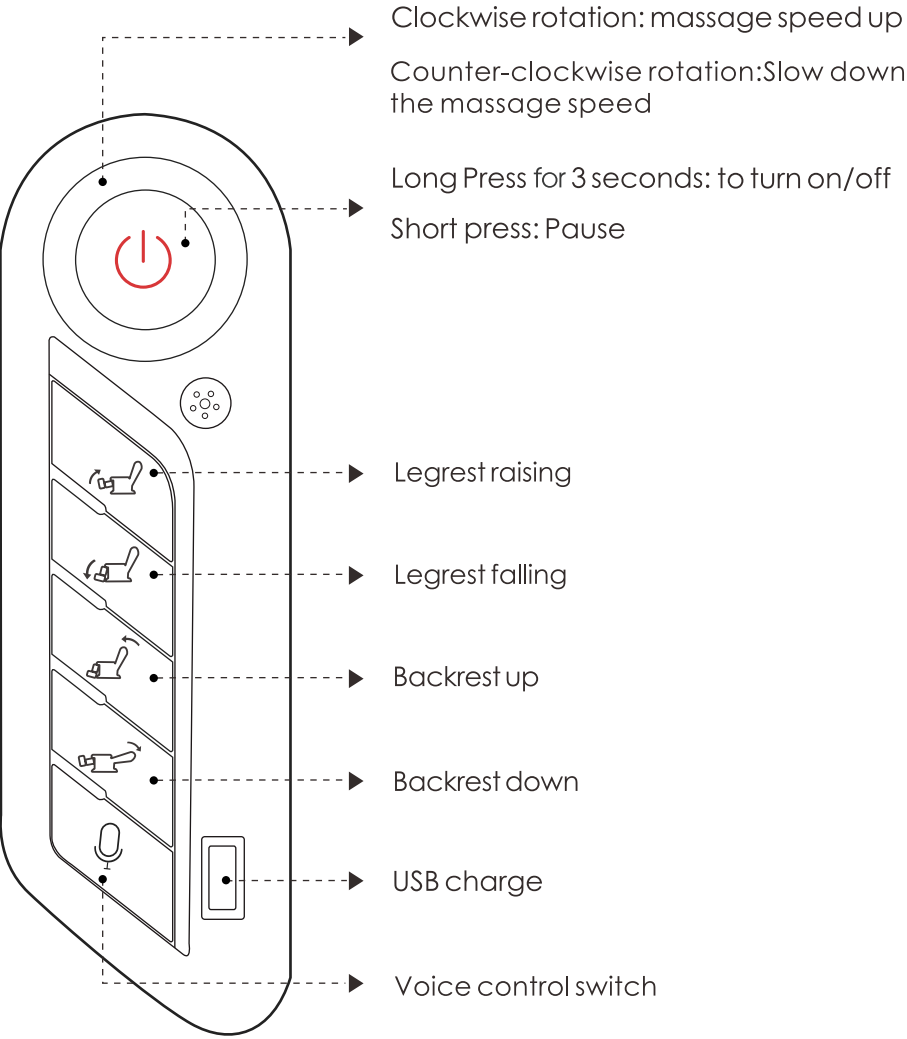
First Step: Turn on the massage chair
Second Step: Turn on the Blue-Tooth function of your mobile Phone, and the search for Massage chair Blue-tooth device(RE-M08).
Third Step: Play Music or Video on your Mobile Phone.



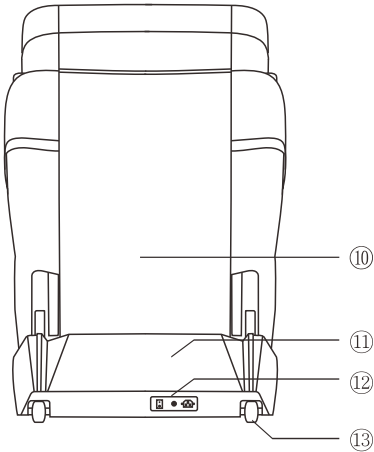
SHORTCUT KEY

NAME OF COMPONENTS

Shortcut Key



(Picture1)



(Picture2)

- | | | | | |
|--------------|-------------|-----------------|------------|-----------------|
| 1/ Pillow | 2/ Shoulder | 3/ Back Cushion | 4/ Speaker | 5/ Shortcut Key |
| 6/ LED Light | 7/ Legrest | 8/ Armrest | 9/ Base | 10/ Rear Cover |
| 11/ PCB Box | 12/ Switch | 13/ Caster | | |

REMOTE CONTROL INSTRUCTIONS



ON/OFF

Please press the power button to turn on the machine and press again to turn it off



AUTO MODE

Please cyclically press this key to select different automatic programs. A total of 10 sets auto massage programs



MANUAL MODE

Shiatsu	Knead	Tap	Knead & Knock	Knock

You can change the massage motion by keeping pressing this button.



SHOULDER POSITION ADJUSTMENT



Please press this button to adjust the height position that the massage hands/rollers during your massage. There are 2 options.

Auto Adjustment.

This massage chair has a scanning function: when you start a program (such as Recovery), the mechanical massage rollers will scan your shoulder position for a few seconds. Please note: to avoid an error in the scanning process (scanning the incorrect shoulder position), please sit up straight when setting up the massage program for the first time. Manual adjustment. After an auto body scan, if you think the massage rollers can not reach your desired neck position, please adjust massage rollers using this button during the process of the massage program in 15 minutes, then massage rollers can reach the position as far as you have set.



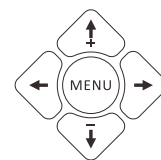
HEATING

Please press this button to turn on/off heating function increase or decrease temperature by



AIRBAG

Press this button to turn on/off all of the airbags



FUNCTION SELECTION

Please press "MENU" into menu bar, you can adjust airbag intensity, Massage rollers speed, etc.



LEGREST UP

Please hold this button to raise the legrest, if you release the button, it will stop.



LEGREST DOWN

Please hold this button to get the legrest back, if you release the button, it will stop.



BACKREST UP

Please hold this button to raise the backrest, if you release the button, it will stop.



BACKREST DOWN

Please hold this button to tilt-back this chair, if you release the button, it will stop.



ZERO-GRAVITY

Please press this button once, this Massage Chair will get into Zero Gravity condition. Please press this button twice, this Massage Chair will get into Normal condition.



FOOT ROLLERS

Please press this button to turn on/off the foot rollers.



SETTING TIME

Please press this button to change working time, 10 minutes, 20 minutes and 30 minutes.



FUNCTION PAUSE

During the massage process, please press this key, the massage chair will stop working. Press again, it will resume working.