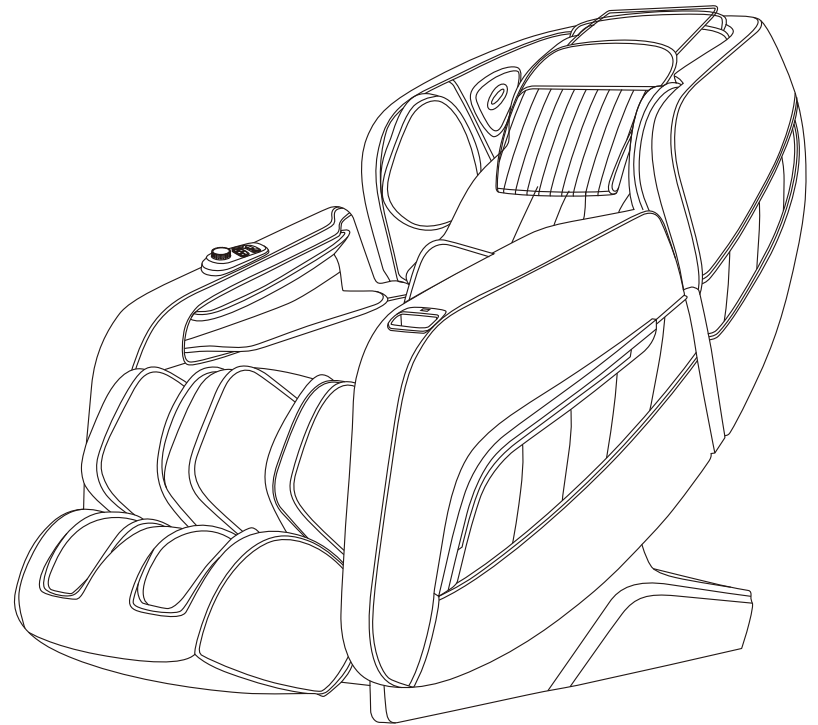


A306-48 MASSAGE CHAIR

OPERATION INSTRUCTIONS

SAVE THESE INSTRUCTIONS



Thanks for purchasing this product. Please read this manual instruction carefully in order to know how to use this product correctly before operation. Please pay more attention to some important safety warning and keep this manual book properly for future use.

Note: Our company reserves the right to change and explain the design of the product. If there is some difference between the product function in market circulation and the description in the manual, it is a normal update of the product, and our company will not inform you otherwise. The specific product function and color shall prevail in kind.

TABLE OF CONTENTS

Safety and Maintenance	02
Safety Warning	04
Names of Components	07
Function	08
Introduction to the Remote Controller	10
Method of Usage	12
Legal notices	37
Product Specification	38

Safety and Maintenance

1. Important Safety Warnings

- Do not allow children to touch any movable part of this product.
- Use the well-grounded power supply unit suitable for this product.
- Pull out the plug after use or before cleaning to avoid any physical injury or damage to the product.
- Operate this product as instructed in this manual.
- Do not use any parts or accessories which are not recommended.
- Do not use this product outdoors.
- Please read the Operation Instructions carefully before operation.
- Never use this product for any other purpose not listed herein.
- 20 minutes of usage each time is recommended.
- Do not use this product if the leather is broken or damaged.
- Do not use this product if the cover or leather is broken or damaged.
- Do not use this product if the radiator hole is covered or blocked.
- Do not drop anything into this product.
- Never fall asleep while using this product.
- Do not use this product if you are drunk or feel unwell.
- Do not use this product within one hour after a meal.
- Do not use this product with excessive force to avoid any injury.
- Do not carry any fragile, explosive, or combustible material in your pocket, such as a mobile phone and lighter when using the massage chair.

2. Operating Environment

- Do not use this product in a very moist environment such as the bathroom.
- Stop using this product immediately when the ambient temperature changes sharply.
- Do not use this product in any heavily-dusty or caustic environment.
- Do not use this product in a small space or a place without good ventilation.
- The normal room temperature ranges from 0 °C to 35 °C.
- Do not use this product in an excessively humid room such as a bathroom. Use it at a relative humidity between 20% and 80%.
- Do not use this product outdoors.
- Avoid direct sunlight.
- Keep this product away from any heat source such as a stove and air outlet of an air conditioner.
- Do not use this product during thunder or lightning weather.
- Do not use this product in dusty places.

3. The following populations should not use this product

- Patients with osteoporosis.
- Patients with heart disease or wearing electronic medical devices such as a pacemaker.
- People who have a fever.
- Pregnant women or women on their menstrual period.
- Patients who are injured or have a skin disease.
- When unsupervised, any children are under the age of 14 and those unconscious are not allowed to use this product.
- People who are told by their physicians to have rest or who feel unwell.
- People whose bodies are wet are forbidden to use this product.
- This product has a hot surface. Persons insensitive to heat must pay attention when using this product.

Safety and Maintenance

4. Safety Precautions

- Check whether voltage is consistent with the specification of this product.
- Never insert or pull out the plug with a wet hand.
- Do not let water flow into this product to avoid electric shock or cause damage to this product.
- Do not pull the power cord when plugging or unplugging it. Rough handling is forbidden.
- Do not damage the wire or modify the circuit of this product.
- Do not clean live parts of this product with a wet cloth such as a power switch and plug.
- Be away from this product in case of power failure to avoid any injury if power is restored suddenly.
- Stop using this product at once while it works abnormal, and consult your local supplier.
- Stop using this product if you feel unwell, and consult your health care practitioner.
- This product is not intended for use by persons (including children) with reduced physical, sensory or mental capabilities, or lack of experience and knowledge, unless they have been given supervision or instruction concerning the use of this product by the personnel responsible for their safety. Children should be supervised to ensure that they do not play with this product.
- If the power cord is damaged, it must be replaced by the manufacturer, its service agent or similarly qualified staff in order to avoid hazards.

5. Product Service and Maintenance

- This product should be maintained by the service center designated by the manufacturer only. No user should disassemble or maintain it without permission.
- Do not forget to turn off the main power switch after usage.
- Do not use this product if the power socket becomes loose.
- If this product will be left unused for a long period of time, it is necessary to roll up the power cord of this product and store this product in a dry and dust-free environment.
- Do not store this product at a high temperature or near open flame. Avoid prolonged exposure to direct sunshine.
- Please clean this product with dry cloth. Never use thinner, benzene or alcohol.
- The mechanical components of this product are specially designed and manufactured, so no special maintenance is needed.
- Do not use a sharp object to stab at this product.
- Do not roll or pull this product on any uneven ground. Instead, it should be lifted before moving.
- Please use this product intermittently. Do not keep it working continuously for a long period of time.

6. Solutions to Ordinary Malfunctions

- If the motor sounds during operation of this product, this is the normal operation sound.
- If the controller cannot work normally, check whether the plug and the power socket are connected reliably, and whether the power switch is turned on.
- If the rated working time is over, this product will automatically activate the power-off button; If this product keeps operating for a long period of time, the temperature protector will stop this product automatically. The product can be used again after half an hour.

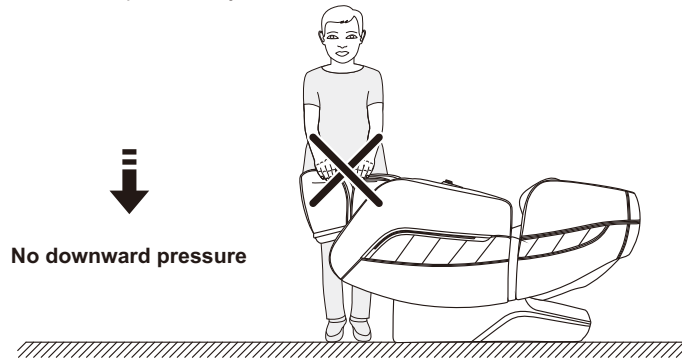
7. Storage Conditions

- Storage room temperature: -5 °C to 35 °C.
- Relative humidity (RH) between 20% and 80%; free of corrosive gases, and a well-ventilated room.

Safety Warning

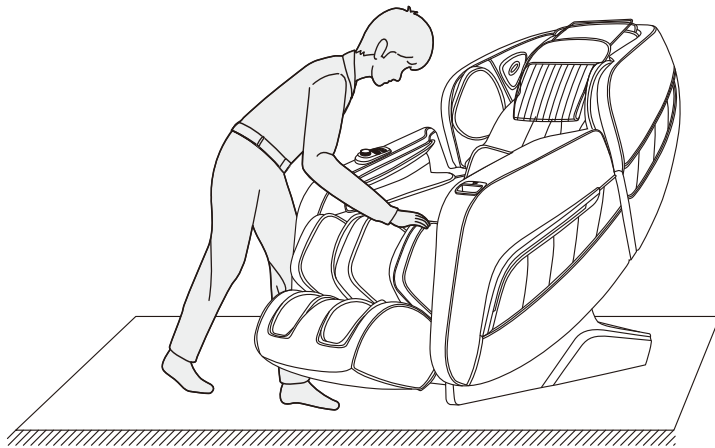
⚠ Warning

When the legrest of the massage chair is lifted, nobody should apply pressure on the legrest to prevent the massage chair from falling forward which will damage this product or result in personal injuries.



⚠ Warning

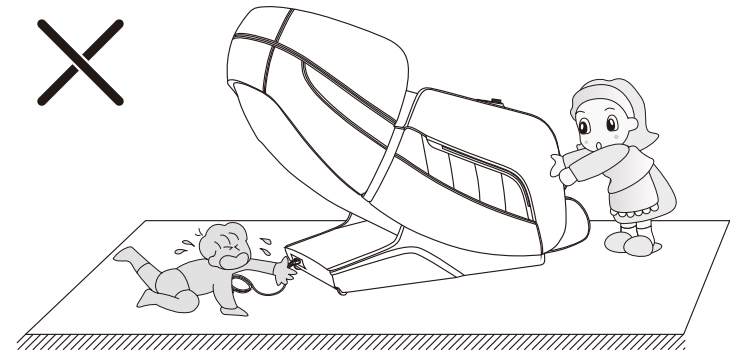
Before sitting on the massage chair, make sure that the massage chair manipulator does not stay in the seat cushion position to avoid discomfort to the buttocks during the body pressing down and any damage to the massage chair manipulator.



Safety Warning

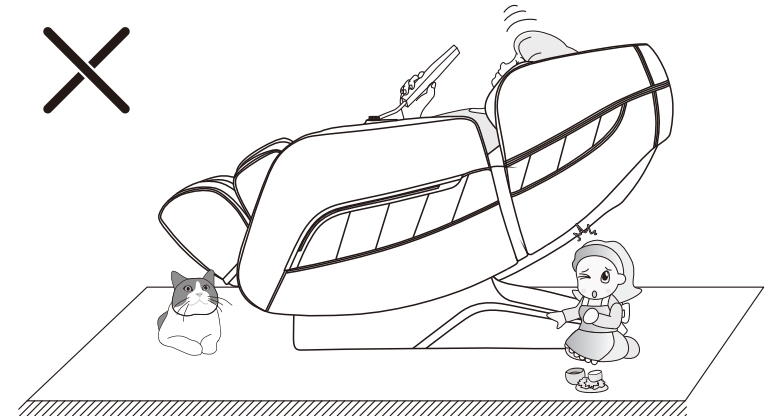
⚠ Warning

Do not remove or pull out the remote controller cable or the power cord in the standby or power-on state to avoid any damage to this product or accidental electric shock of a body part. You are advised to unplug the remote controller cable and the power cord and put them away after you use the massage chair.



⚠ Warning

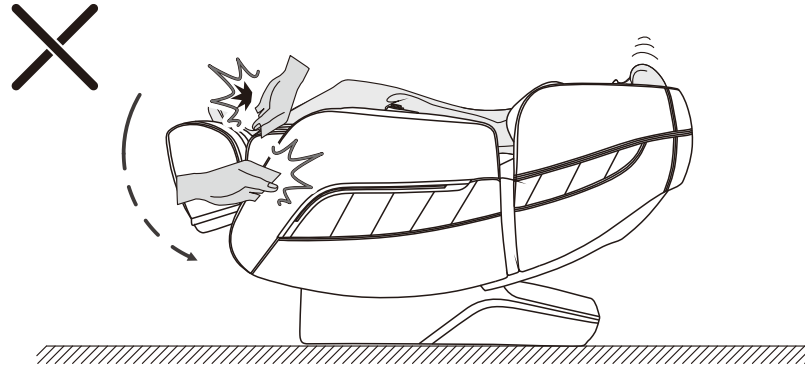
When the zero-gravity lying function is enabled, be sure to check whether there is any child or pet staying or playing under the bottom of the legrest and backrest, in order to avoid any damage to this product or physical injury.



Safety Warning

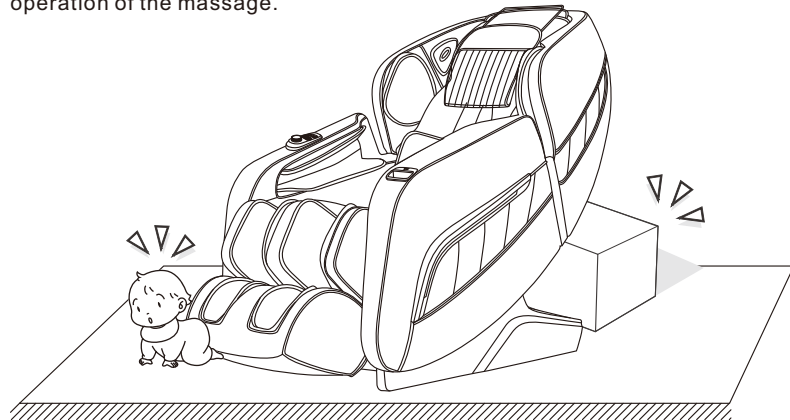
Warning

When adjusting the footrest retractable function or when footrest is declining, please be sure not to put hard objects (such as keys, mobile phones, Etc.) or put the hand into the gap of the footrest, and the intersection with the armrest; To avoid product damage or personal injury caused during the process.

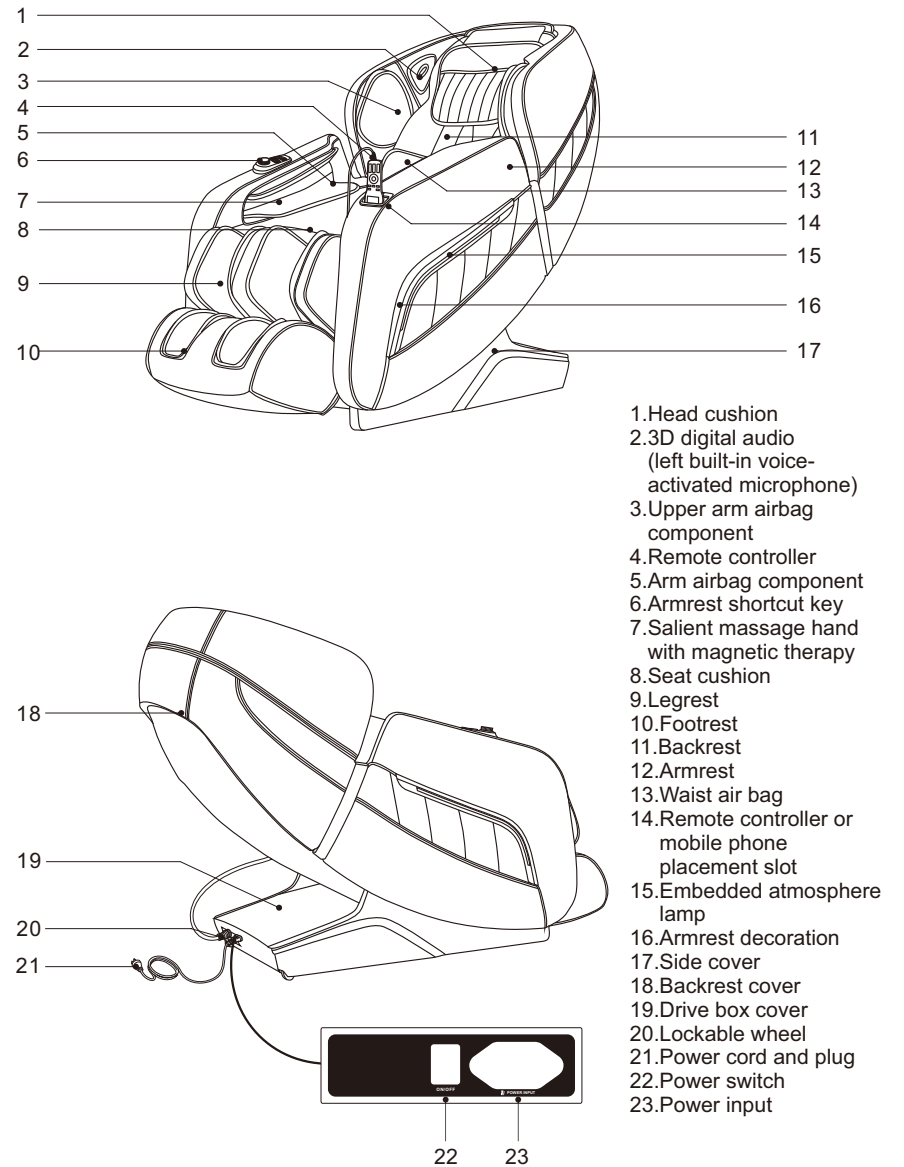


Warning

Before turning on the massage chair, check the surroundings to make sure that there are no people, pets or other objects around the massage chair. Avoid damage to the product or other objects or personal injury during the operation of the massage.



Name of Components



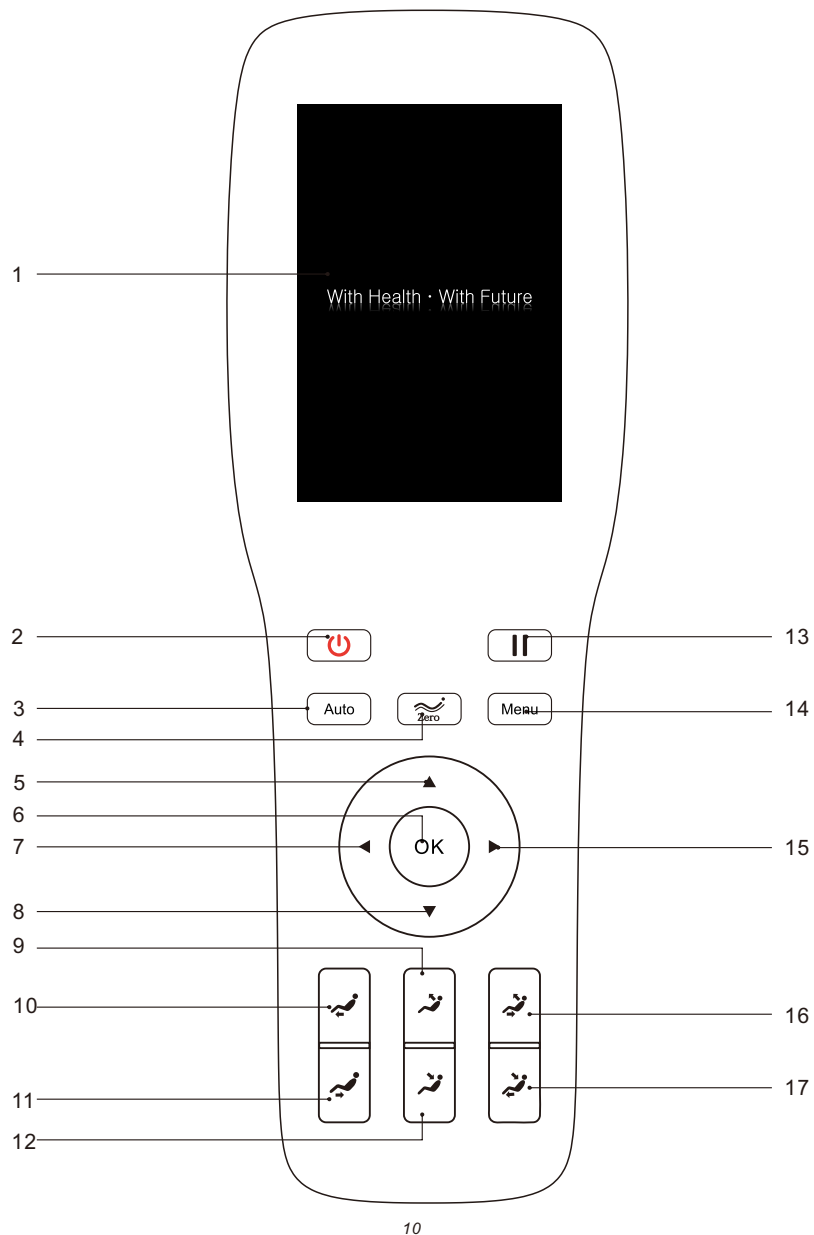
Function

- This product is designed with a set of massage chair manipulators that can move up and down, drive four wheels and operate in mute mode.
- There are five simulative massage techniques: Shiatsu, Kneading, Tapping, Knocking , and simultaneous kneading and Tapping.
- This product is equipped with automatic shoulder detection and positioning.
- This product is equipped with 12 automatic massage functions, Comfortable massage, Easy massage, Stretch massage, Neck & shoulder massage, Full body massage, Chiropractic massage, Back & waist massage, Full air pressure, Fatigue recovery, Elderly care, Beautiful buttock, Sleep peacefully.
- Manual massage range selection is available for the manipulators: including five massage ranges for your option (i.e. full range, local, fixed point, upper back and lower back).
- There are five intelligent memory functions (M1, M2, M3, M4, M5): Remarks on saved massage functions and techniques are available (e.g. father, mother, daughter, son, or none).
- Massage adjustment function: 7 massage adjustment functions are available, including 5 speed levels for back massage adjustment, 5 intensity levels for back massage adjustment, 5 range levels for massage adjustment, 5 width levels for massage adjustment, 5 intensity levels for airbag adjustment, 3 speed levels for roller adjustment, 4 time levels for massage adjustment.
- Airbag massage function for the upper body: airbag massage function for the arms (8 built-in air bags), airbag massage function for the upper arms (4 built-in air bags), airbag massage function for the waist (4 built-in air bags), and 5 intensity levels for airbag adjustment.
- Airbag massage function for the lower body: airbag massage function for the legs (6 built-in air bags), airbag massage function for the feet (22 built-in air bags), and 5 intensity levels for airbag adjustment.
- The slide rail technology for the backrest ensures zero space between the backrest and wall, so as to save the space to the greatest extent.
- This product is equipped with the back heat treatment function: carbon fiber is used as far infrared heat source.
- The backrest guide adopts the curve guide technology, so it completely fits the curve of human back. The full body can enjoy full massage from the head to the thighs.
- This product is equipped with the leg kneading massage function: the kneading and airbag squeezing massage functions are provided on the leg rest to relieve the stiffness or tension of the leg muscles caused by standing for a long period of time.
- The music player system is available. 3D digital audio systems are built into left and right upper arms. The Bluetooth function of the smart device can be used to play music wirelessly.
- This product is equipped with the intelligent voice control and recognition function.
- In the air bags for the left and right palms, there are salient massage bands with magnetic therapy function.
- The legrest is equipped with a stepless flex adjusting function suitable for users with different heights.
- This product is equipped with the foot roller massage function.
- At the calf have kneading massage function which can relieve the stiffness and stress of calf.

Function

- The right armrest is provided with on/off key, linkage adjustment key, pause/run button, AUTO key, voice control and wake-up button, heat treatment key, air pressure key, Legrest up/down key, zero gravity key, backrest up/down key.
- The right armrest is equipped with USB charging function.
- The armrests on both sides are equipped with LED atmosphere lamps.
- A LCD color screen Remote controller is available.
- After shutdown the chair , it will automatic sitting up, and the manipulator will reset as well.

Introduction to the Remote Controller

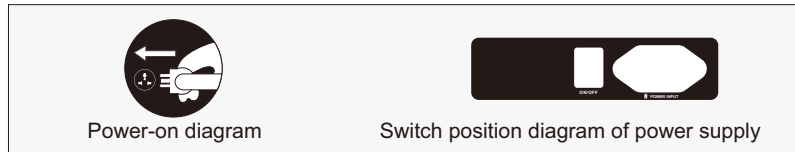


Introduction to the Remote Controller

1. Display:
 - TFT color LCD showing the massage functions in the running state.
2. Switch:
 - Turn on or off the message.
3. AUTO key:
 - Enter the automatic function mode selection interface. For more information about the functions, refer to Page 16 of the Operation Instructions.
4. Zero-gravity key:
 - Adjust the angle of the massage chair for zero gravity. There are a total of four modes to choose from (i.e. 1st pressing is Level 1; 2nd pressing is Level 2; 3rd pressing is Level 3; and 4th pressing makes the massage chair restore to the original state).
5. Up key:
 - Up navigation key: select an object upward in the menu, or adjust the massage position upward.
6. OK:
 - Confirm the selected massage function for massage.
7. Left button:
 - Left navigation key: return to the previous menu, or select an object leftwards.
8. Down key:
 - Down navigation key: select an object downward in the menu, or adjust the massage position downward.
9. Backrest up button:
 - Adjust the backrest upward according to your own massage needs for the most comfortable massage posture.
10. Legrest Up key:
 - Adjust the legrest upward according to your own massage needs for the most comfortable massage posture.
11. Legrest down key:
 - Adjust the leg rest downward according to your own massage needs for the most comfortable massage posture.
12. Backrest down button:
 - Adjust the backrest downward according to your own massage needs for the most comfortable massage posture.
13. Pause button:
 - Pause all the massage functions currently in service. Press this button again to continue to run all the massage functions before such pause.
14. Menu button:
 - Enter the main menu selection interface. For more information about the functions, refer to Page 15 of the Operation Instructions.
15. Right button:
 - Right navigation key: enter the submenu, or select an object rightwards.
16. Linkage sitting key:
 - According to the required massage angle, simultaneously adjust the linkage sitting function of the backrest and the leg rest for the most comfortable linkage sitting massage posture.
17. Linkage lying key:
 - According to the required massage angle, simultaneously adjust the linkage lying function of the backrest and the leg rest for the most comfortable linkage lying massage posture.

Method of Usage

I. Turn on the power supply of this product



II. Massage function control operation

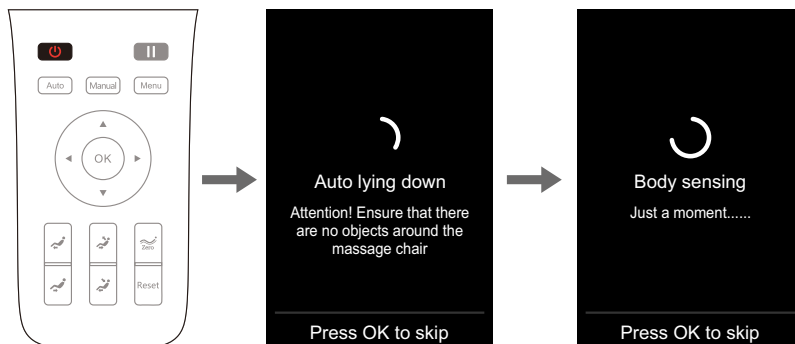
1. Standby

· After the massage chair is powered on and turned off, the remote controller is blank in the standby state (i.e. the LED lamp is off) and cannot perform any operation (except the key switch).



2. Start to massage (power switch)

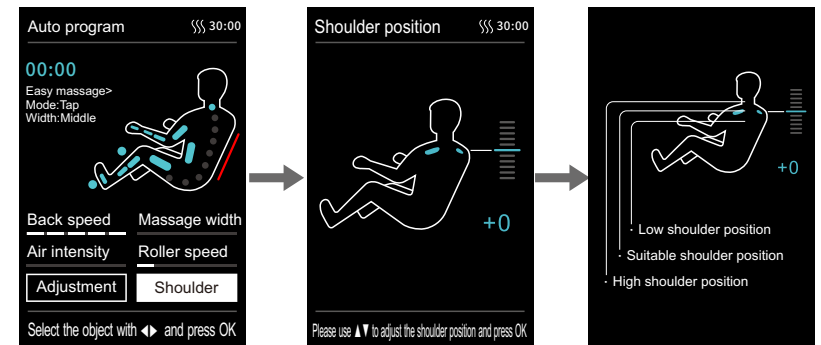
· Press "Power" button to start massage, enter the boot screen, backrest maintains the default position.
 · After automatically lying down to the default position, massage chair will automatically detect the shoulder position and body (note: fast mode only detect shoulder position, other modes detect whole body and shoulder position), waiting the detection finish. Or you can press "confirm" button, the massage chair will directly start to massage in default without shoulder position and body sensing.



Method of Usage

Shoulder position adjustment

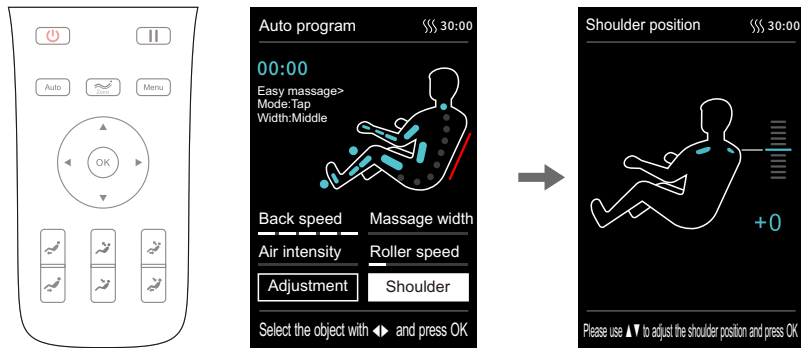
· After detecting the shoulder position, the buzzer will beep. If there is any difference from the actual shoulder position, adjust it to the appropriate position by pressing the "UP" or "DOWN" key. The shoulder position has 11 adjustable levels. If there is no shoulder position adjustment within 10 seconds, the massage function will start automatically. Press "OK" directly to start massage immediately. If no shoulder position can be detected, massage will be started according to the shoulder height by default. Note: During massage, under the information interface, you can press "Right Button" to select the "Shoulder Adjustment" menu, and press "OK" to enter the shoulder adjustment interface. You can also use "Up Key" or "Down Key" to adjust the shoulder position.



Button	Description
	Move the massage balls upward to a suitable shoulder position
	Move the massage balls downward to a suitable shoulder position

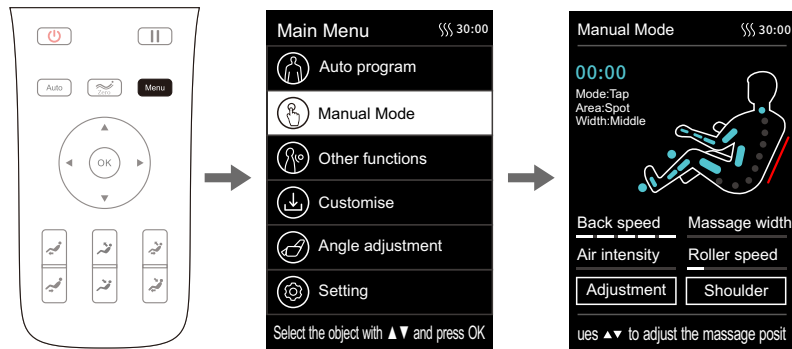
· If you need to adjust the shoulder position after the massage program is started, you can directly select "Shoulder Position Adjustment" to enter the shoulder position adjustment interface; you can press "Up Key" or "Down Key" to adjust the shoulder position height; you can press "Left Button" to return to the previous menu, or wait for 10 seconds to automatically return to the information interface

Method of Usage



Massage position adjustment

- After entering the massage program, if you need to adjust the massage position, you can press the "Menu" button on the remote controller to select "Manual Function" to enter; you can select any one of the manual functions, and then press "Left Button" to return to the information interface (i.e. The information interface will switch to the manual function interface)
- In the manual function interface, if the massage range shows a fixed point or local area, you can directly press "Up Key" or "Down Key" to adjust the manipulator upward and downward
- In the manual function interface, if the massage range displays neither fixed point nor local area, you need to select "Massage Adjustment" to enter, and then select "Massage area", and a fixed point or local area, and press "Left Button" to return to the information interface. Next, you need to press "Up Key" or "Down Key" to adjust the manipulator upward and downward

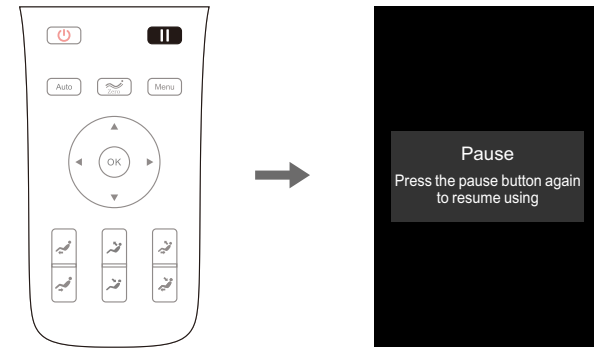


Note: you can't adjust the massage position when it is in auto program.

Method of Usage

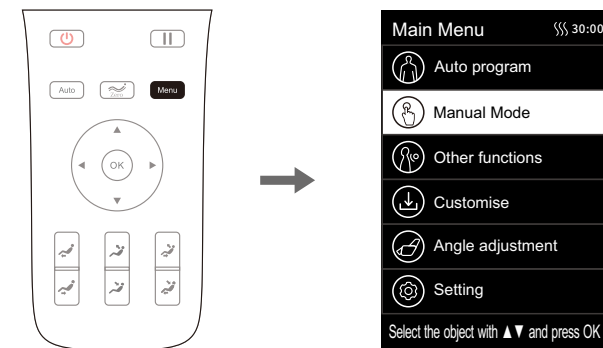
3. Pause button

- While the massage function is in service, press "Pause" button to temporarily stop all the massage functions; press "Pause" button again to continue the massage function before pause. If the pause time exceeds 20 minutes, all the massage functions will be automatically turned off.



4. Menu button

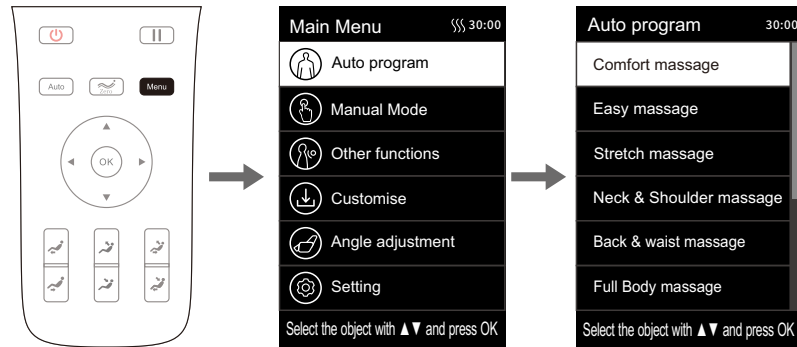
- Press "Menu Button" to enter the massage function selection interface of the main menu, including automatic, manual, and other functions, intelligent storage, angle adjustment, settings and other function interfaces.
- Enter the menu interface. Press "Up Key" or "Down Key" to select the function. Confirm via "OK" to enter the next level of selection; press "Left Button" to return to the previous menu interface.



Method of Usage

1) Automatic program (main menu - Auto program)

- Press "Menu Button" to enter the main menu interface. Press "Up Key" or "Down Key" to select the automatic programs. Press "OK" (or press "Auto" button on the hand controller.) to enter the selection of automatic programs.
- 21 special automatic massage programs are available: Comfortable massage, Easy massage, Stretch massage, Neck & shoulder massage, Full body massage, Chiropractic massage, Back & waist massage, Full air pressure, Fatigue recovery, Elderly care, Beautiful buttock, Sleep peacefully.
- Enter the automatic program interface. Press "Up Key" or "Down Key" to select any automatic function massage program. It will automatically return to the information interface, which will be displayed as the automatic program information interface.



Program	Description
Comfortable massage	The most comfortable massage experience.
Easy massage	Gentle and comfortable deep massage to relieve your body fatigue and relax the body.
Stretch massage	Stretch your legs and waist through the leg rest and the backrest to effectively remove fatigue, relieve joint pain and restore vitality.
Neck & shoulder massage	With the unique massage technique for the neck and shoulder, the effective massage for the cervical spine and scapula can be performed to relieve the neck and shoulder pain and reduce fatigue on the neck and shoulder.

Method of Usage

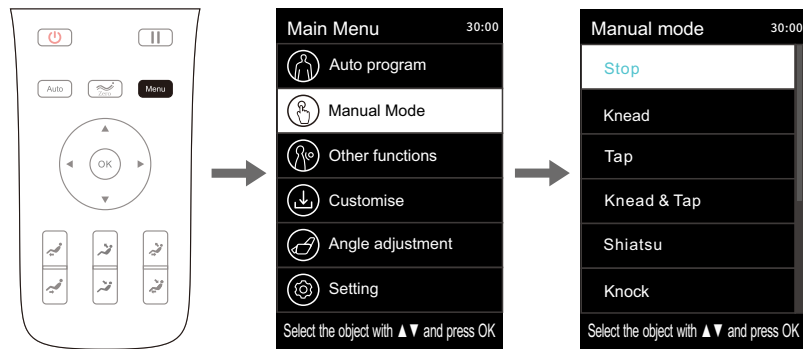
Full body massage	Deep massage to rejuvenate your body.
Chiropractic massage	Focus on spine massage and fully relieve the fatigue and pain from your body.
Back & waist massage	Focus on the back and waist massage to relieve the pain on the back and waist.
Full air pressure	Focus on whole body air pressure massage to achieve total relaxation of the body, deep massage of the body, and overall relief of body fatigue and ache.
Fatigue recovery	Restore the full body from fatigue and pain; achieve relaxation, improve microcirculation, and quickly relieve fatigue for the back and limbs.
Elderly care	Stimulate the circulation of the blood and cause the muscles and joints to relax; quickly improve the body's microcirculation and enhance your immunity.
Beautiful buttock	Effective massage on the buttocks and thighs to shape the body and reduce the accumulation of excess body fat.
Sleep peacefully	Through the massage for the twelve major acupoints for healthcare, it helps the body to adjust balance, quickly improve your sleep and sleep quality.

Note: All automatic programs that have been selected to run will be displayed in the massage function status bar.

Method of Usage

2) Manual function (main menu - manual function)

- Press "Menu Button" to enter the main menu interface. Press "Up Key" or "Down Key" to select the manual program, and press "OK" to enter the manual program interface.
- 5 manual massage techniques/functions: OFF, kneading, Tapping, simultaneous kneading and tapping, Shiatsu, knocking, etc.
- After entering the manual program interface, press "Up Key" or "Down Key" to select the required manual massage technique. Press "OK" to confirm. Press "Left Button" to return to the previous interface. After returning to the information interface, you will find that you have entered the information interface of the manual function.

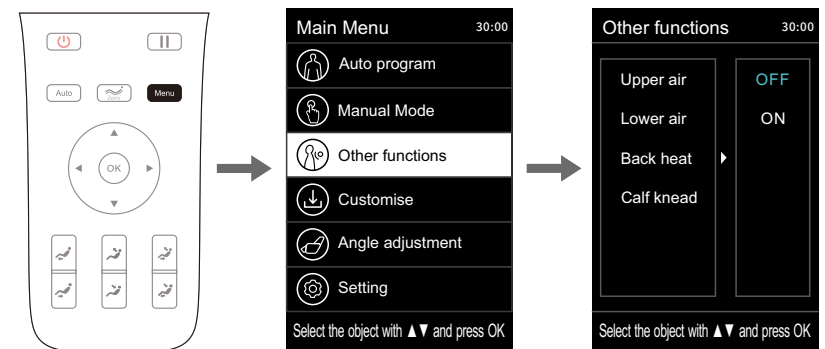


Technique	Description	
Kneading	Speed	· 5 speed levels adjustable · 3 width levels adjustable
Tapping	Speed, width	
Simultaneous kneading and tapping	Speed	
Shiatsu	Speed, width	
Knocking	Speed, width	

Method of Usage

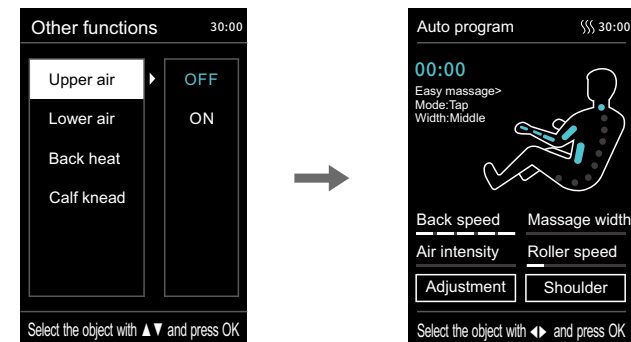
3) Other functions (main menu key - other functions)

- Press the "Menu key" to enter the main menu interface, press the "Up key" or "Down key" to select other functions icon, and press the "OK key" to enter other functions interfaces.
- Other functions include: upper body air pressure, lower body air pressure, back heating, calf kneading.
- After entering the other function interface, press the "Up key" or "Down key" to select the desired massage function, after selecting one of the functions, use the "right key" to turn on or off the function, and then press "OK key" to confirm. Press "left key" to return to the previous menu interface.



01) Other functions - airbag massage for the upper body

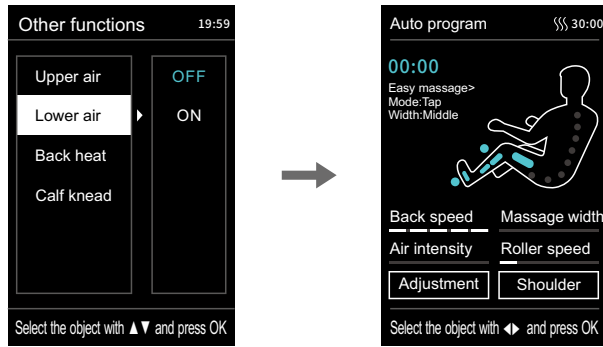
- Upper air massage: including upper arm air pressure, waist air pressure, arm air pressure.
- Enter the other function interface, press the "Up key" or "Down key" to select the upper body air pressure massage function, press the "right key" to enter the upper body air pressure to select on or off, and then press the "OK key" to confirm. Press "left key" to return to the previous menu interface.



Method of Usage

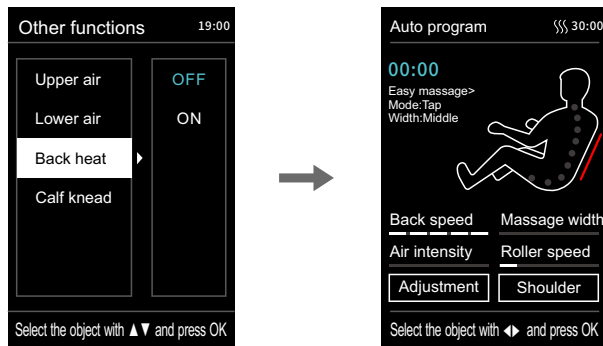
02) Other functions - airbag massage for the lower body

- Lower body air pressure: including leg air pressure and foot air pressure.
- Enter the other function interface, press the "Up key" or "Down key" to select the lower body air pressure massage function, press the "right key" to select on or off, and then press the "OK key" to confirm. Press "left key" to return to the previous menu interface.



03) Other functions - back heating

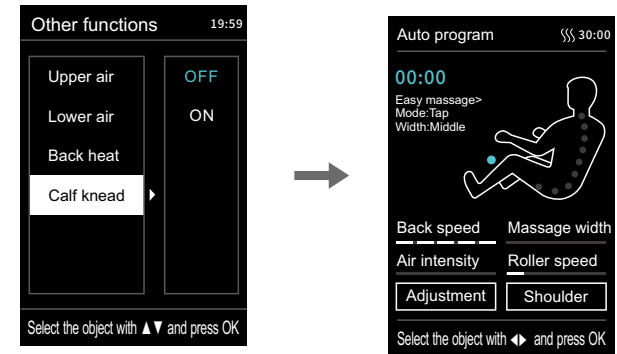
- Back heating: Turn on or off the back heating function, turn it on for 3 minutes to warm up.
- Enter the other functions interface, press the "Up key" or "Down key" to select the back heating function, enter the "on or off" selection by "right key", and then press the "OK key" to confirm. Press "left key" to return to the previous menu interface.



Method of Usage

04) Other functions - calf kneading

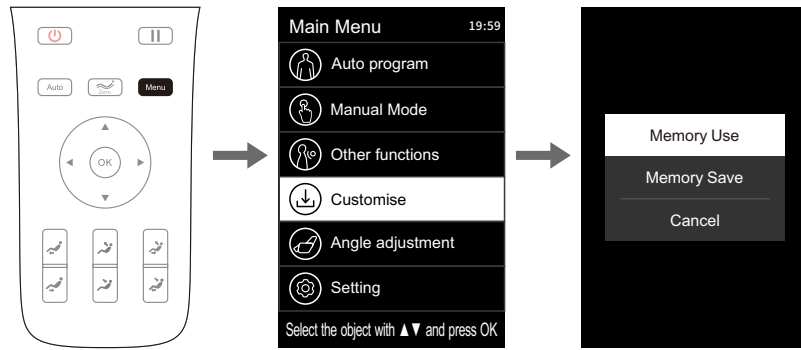
- Calf kneading: Turn on or off the calf rub function.
- Enter the other functions interface, press the "Up key" or "Down key" to select the calf kneading function, enter the "on or off" selection by "right key", and then press the "OK key" to confirm. Press "left key" to return to the previous menu interface.



4) Intelligent storage (main menu - Customise)

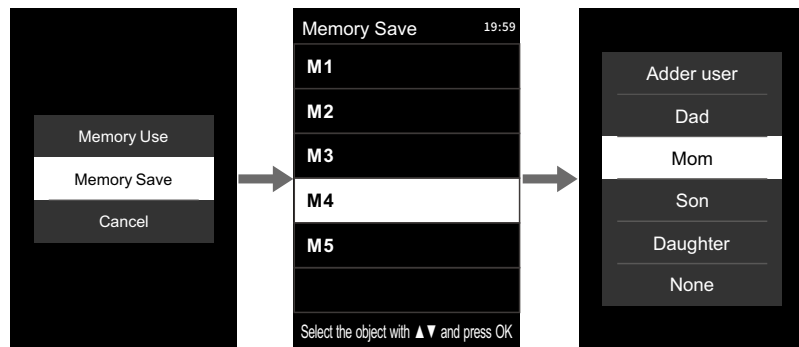
- Press the "Menu key" to enter the menu interface, press the "Up key" or "Down key" to select the customise icon, and press the "OK key" to enter the customise interface, including: Memory use, Memory Save, Cancel.
- Smart Memory use include: M1, M2, M3, M4, M5.
- Smart Memory Save includes: M1, M2, M3, M4, M5. Use function: Recall previously saved message programs, including message mode, message technique, air pressure mode and intensity, legrest and backrest position, angle. Save: Save the currently running message program, including message technique, air pressure mode and intensity, position and angle of the legrest and backrest.
- Cancel is an exit option. Note: When saving the message mode, you can make notes on the saved message programs (eg: father, mother, son, daughter, none).

Method of Usage



01) Customise -Memory save or cancel

- After entering the memory save interface, press the "Up key" or "Down key" to select the memory save function. Press "OK key" to save or cancel.
- Enter the memory save interface, press the "Up key" or "Down key" to select any one of the M1-M5 saving programs you want, and press the "OK key" to select and confirm, and make remarks for saving the massage function ; Press "left key" to return to the previous menu interface.

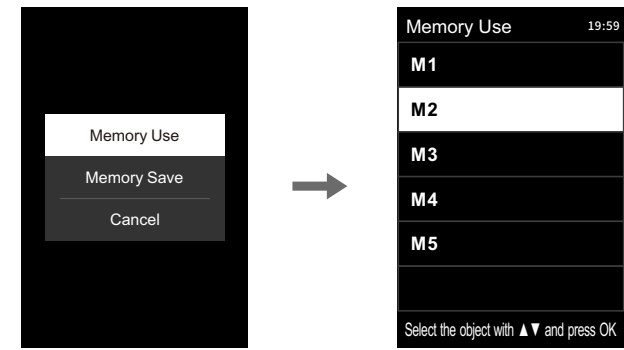


Note: Make notes on the saved massage functions and techniques (eg: father, mother, daughter, son, none).

02) Customise -Memory use or cancel

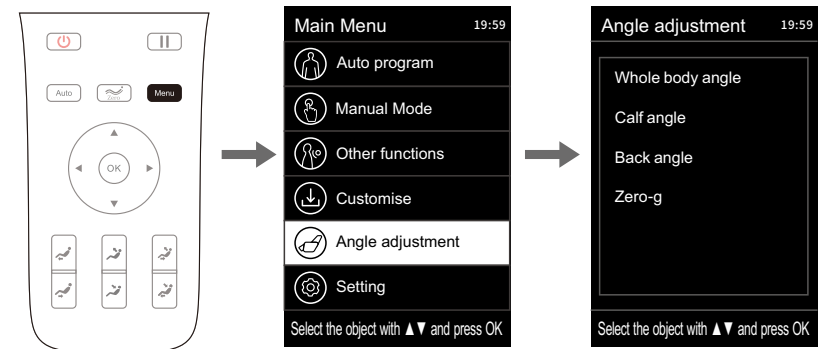
- After entering the memory use interface, press the "Up key" or "Down key" to select the memory use function. Press "OK key" to enter memory use or cancel.
- Enter the memory use interface, press the "Up key" or "Down key" to select the desired use program from M1-M5 to recall the saved massage program; press the "left key" to return to the previous menu interface.

Method of Usage



5) Angle adjustment (main menu - angle adjustment)

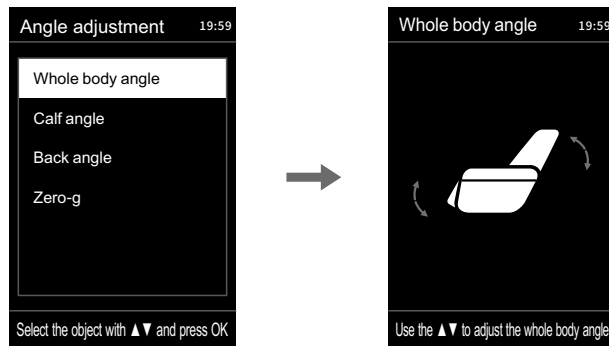
- Press "Menu" to enter the main menu interface, press "Up key" or "Down key" to select the angle adjustment icon, and press "OK key" to enter the angle adjustment interface.
- Angle adjustment includes: whole body angle, calf angle, back angle, zero-gravity.
- After entering the angle adjustment interface, press the "Up key" or "Down key" to select the desired angle adjustment function, and then press the "OK key" to adjust the selected angle to confirm. Press "left key" to return to the previous menu interface.



Method of Usage

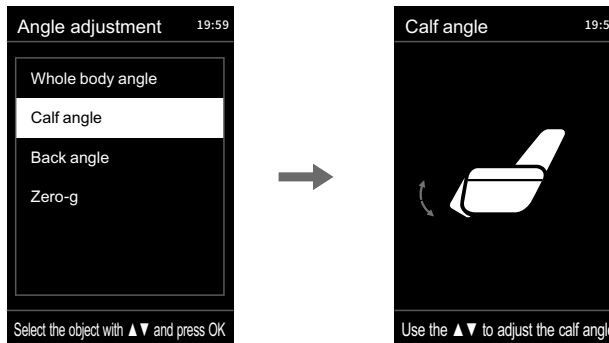
01) Angle adjustment - whole body angle

- Whole body angle adjustment: Adjust the angle of the backrest frame and the small leg frame at the same time.
- Enter the angle adjustment interface, press the "Up key" or "Down key" to select the whole body angle, and then press the "Up key" or "Down key" to adjust the whole body angle to the desired angle degree; press "left key" to return to the previous menu interface.



02) Angle adjustment - calf angle

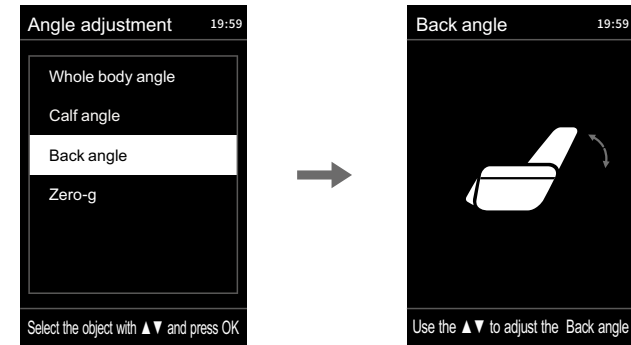
- Calf angle adjustment: Adjust the legrest up and down.
- Enter the angle adjustment interface, press the "Up key" or "Down key" to select the calf angle function, and then press the "Up key" or "Down key" to adjust the legrest frame to the desired massage position degree; press "left key" to return to the previous menu interface.



Method of Usage

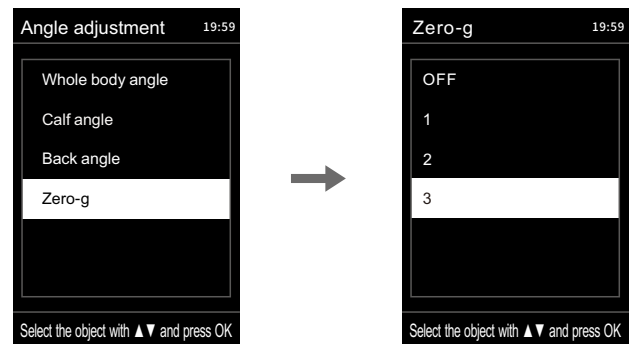
03) Angle adjustment - back angle

- Back angle adjustment: Adjust the backrest frame to lie down.
- Enter the angle adjustment interface, press the "Up key" or "Down key" to select the back angle function, and then press the "Up key" or "Down key" to adjust the backrest frame to the desired massage position degree; press "left key" to return to the previous menu interface.



04) Angle adjustment - zero gravity

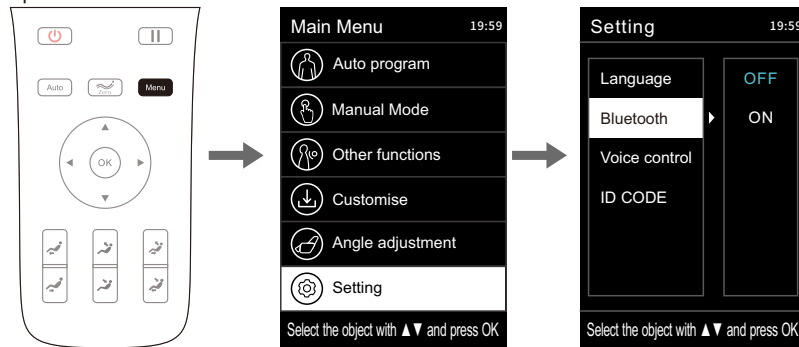
- Zero-gravity adjustment: There are three angles of zero-gravity adjustment and zero-gravity-off function, a total of four modes can be selected.
- Enter the angle adjustment interface, press the "Up key" or "Down key" to select the zero gravity function; press the "OK key" to enter the zero gravity interface, and then press the "Up key" or "Down key" to select zero gravity angle function among Off, 1st, 2nd or 3rd angle and then press the "OK key" to confirm; press the "left key" to return to the previous menu interface.



Method of Usage

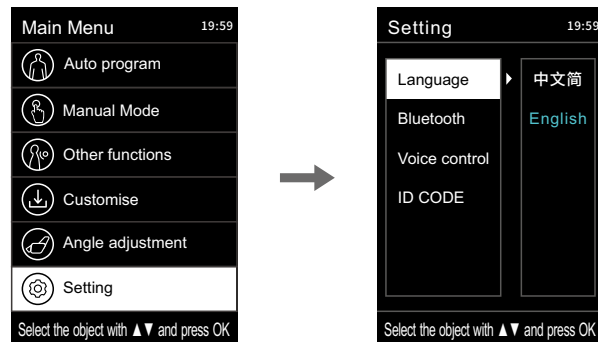
6) Setting(Main menu-Setting)

- Press the "Menu button" to enter the main menu interface, press the "Up key" or "Down key" to select the setting icon, and press the "OK key" to enter the setting interface.
- Settings include: language settings, bluetooth settings, smart voice control, device ID code.
- After entering the setting interface, press the "Up key" or "Down key" to select the desired setting function, and then press the "right key" to set the selected setting function, and then press "OK key" to confirm; press "Left key" to return to the previous menu interface.



01) Setting - Language

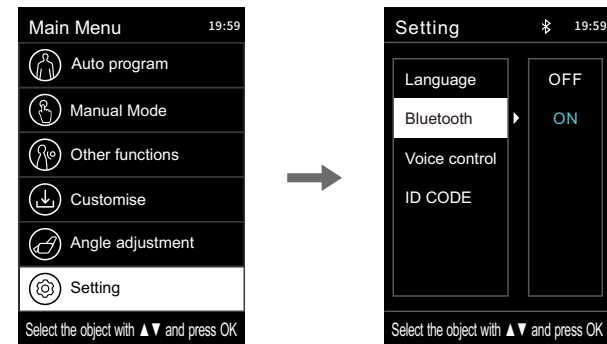
- Language setting: including Chinese and English(this function has a memory, and it will still be the last selected state after power off and restart).
- Enter the setting interface, press the"Up key" or "Down key" to select the language setting, and enter the language setting by "right key",Press"OK key" to select the desired Chinese Simplified or English; press "Left key" to return to the previous menu interface.



Method of Usage

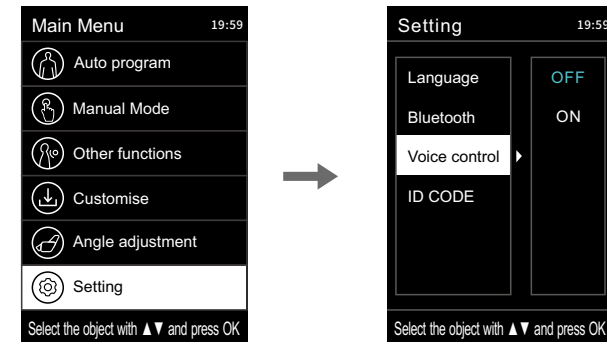
02) Settings - Bluetooth

- Bluetooth setting (this function is disabled by default): After enabling the Bluetooth function of the massage chair, you can connect a Bluetooth-enabled sound source device (such as a mobile phone, MID tablet, etc.) The music played by the music source device is wirelessly transmitted to the massage chair audio system for music playback.
- Enter the setting interface, press the"Up key" or "Down key" to select the Bluetooth setting, enter the Bluetooth function through the "right key" to enable or disable it, and press the"OK key" to select the desired enable or disable; press the "Left key" to return to the previous menu interface.



03) Setting - intelligent voice control

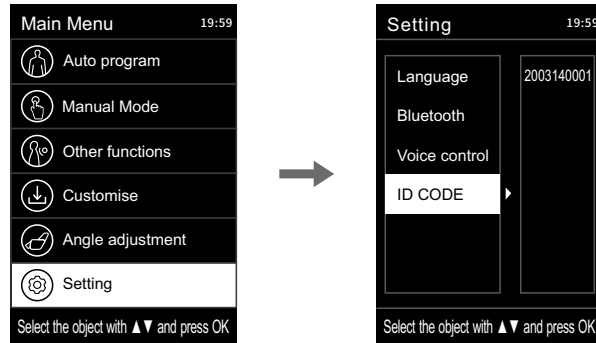
- Smart voice control: Turn on or off the smart voice control function (this function has a memory, and the last selected state is retained after power off and restart); Note: When the smart voice control is turned off, the voice wake-up cannot be performed.
- Enter the setting interface, press the"Up key" or "Down key" to select the intelligent voice control function, enter the intelligent voice control setting through the "right key", press the"OK key" to select the desired enable or disable; press the "Left key" to return Go to the previous menu interface.



Method of Usage

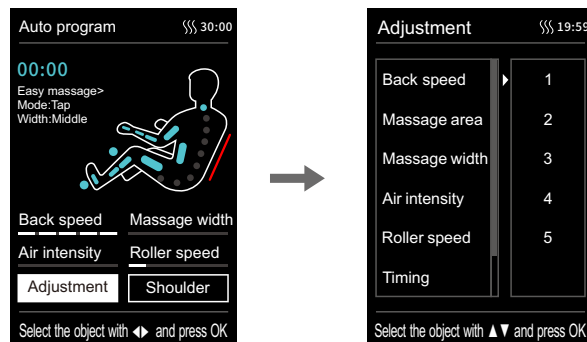
04)Equipment ID

- Equipment ID: Display the current device ID number.
- Enter the settings interface. Press "Up Key" or "Down Key" to select the equipment ID and check the equipment number of the current device.



7)Message adjustment

- In the information interface state, press the "Left key" or "right key" to select the message adjustment button, and press the "OK key" to enter the message adjustment interface.
- Message adjustment includes: back speed, message area, message width, air intensity, roller speed, timing.
- After entering the message adjustment interface, press the "Up key" or "Down key" to select the desired message adjustment function, after selecting any message adjustment function, enter the message gear selection through the "right key", and then press "OK key" to confirm the selected gear. Press "left key" to return to the previous menu interface.



28

Method of Usage

Function	Description
Back massage speed	5 speed levels adjustable
Massage range	There are 5 modes for your choice: fixed point, local area, full back, upper back, and lower back
Massage width	3 width levels adjustable
Airbag intensity	5 intensity levels adjustable
Roller speed	Choose from 4 modes including OFF and Level 1-3
Massage time	Choose from 4 modes: +10min, +5min, -5min, -10min

Notice:

- Depending on the remaining massage time, when the displayed time is not enough to add or subtract a certain time, the operation will not be displayed (the upper limit of the time display is 40 minutes). For example: the display time of the hand controller is 39 minutes, the range of massage time adjustment is: -5 minutes, -10 minutes (cannot display +10 minutes, +5 minutes).
- The adjustment of the air pressure can only be used when the air pressure function or automatic function is turned on (please refer to page 18 of this manual for details on how to turn on the air pressure function).


5.Zero-gravity key

- Press "Zero-gravity Key" to adjust the position of zero gravity. You can choose different angle positions for zero gravity according to your own needs (i.e. 1st pressing is Level 1; 2nd pressing is Level 2; 3rd pressing is Level 3; and 4th pressing makes the massage chair restore to the original state).









29

Method of Usage

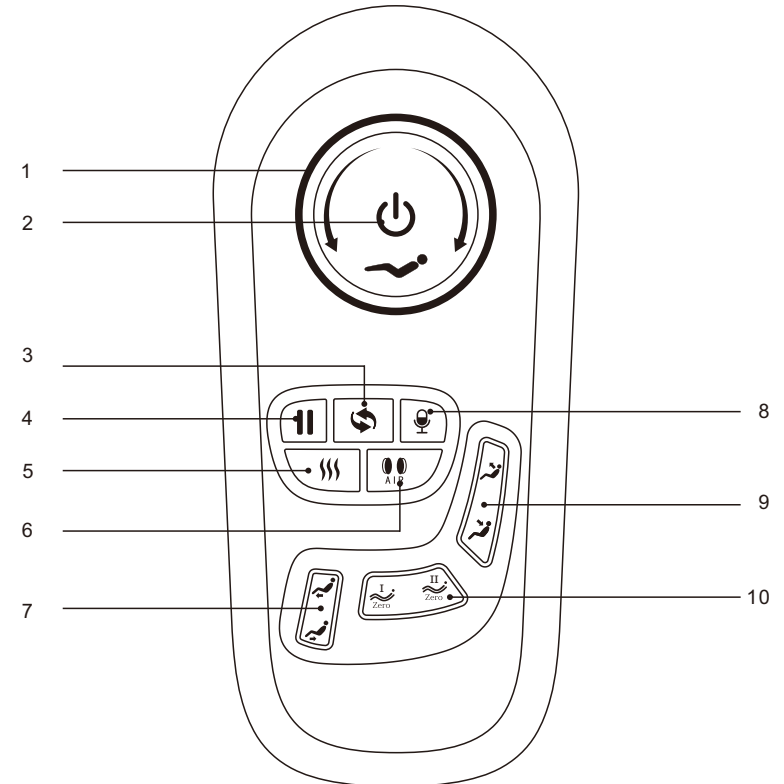
Button	Description
	Zero-gravity Key: Once it is pressed, the positions of the leg rest and the backrest can be automatically adjusted to the positions for zero gravity. There are three zero-gravity modes and the lying OFF mode, which can be switched.

6. Lying angle adjustment button

Button	Description
	Leg rest up button: Hold down the button to make the leg rest rise slowly. Release it to stop such action.
	Leg rest down button: Hold down the button to make the leg rest move downward slowly. Release it to stop such action.
	Backrest up button: Hold down the button to make the backrest rise slowly. Release it to stop such action.
	Backrest down button: Hold down the button to make the backrest move downward slowly. Release it to stop such action.
	Linkage sitting key: By holding down this key, the backrest will rise slowly and the leg rest will move downward slowly; by releasing it, such UP/DOWN action of the backrest and the leg rest will be stopped.
	Linkage lying key: By holding down this key, the backrest will move downward slowly and the leg rest will rise slowly; by releasing it, such DOWN/UP action of the backrest and the Leg rest will be stopped.














Method of Usage

III. Introduction to Armrest Shortcut Keys



1. Linkage adjustment key: press it to perform linkage adjustment on the backrest for upward/downward movement.
2. ON/OFF key: press it to start the massage chair.
3. AUTO key: press it to enable the automatic massage function. Press and hold the button for three seconds to turn off the armrest lamp; operate it again to turn it on
4. Pause/run button: pause or run all massage functions.
5. Heat treatment key: click the key to enable or disable the heat treatment function.
6. Air pressure key: turn on/off air pressure massage function.
7. Legrest up/down key: press it to make the legrest move upward/downward.
8. Voice control and wake-up button: Short press to enable the voice control function, long press 3 seconds to turn on or off the voice control function.
9. Backrest up/down key: press it to make the backrest move upward/downward.
10. Zero-gravity key: press it to adjust the massage chair to the angle for zero gravity.

Method of Usage

Function	Description
	Power button: Short press this button to pause the operation; if it is hold down for 3 seconds, power will be ON/OFF. If the pause time during massage exceeds 20 minutes, all the massage functions will be automatically turned off.
	Linkage lying knob: By rotating this knob clockwise, the backrest will move downward slowly and the legrest will rise slowly; by releasing it, such DOWN/UP action of the backrest and the legrest will be stopped.
	Linkage sitting knob: By rotating this knob counterclockwise, the backrest will rise slowly and the legrest will move downward slowly; by releasing it, such UP/DOWN action of the backrest and the legrest will be stopped.
	Press this button during massage, and all the massage actions will be suspended at once. (i.e. the massage chair will turn off after 20min). Then press this button again to restore all the previous massage actions.
	Automatic mode key: Press it to switch among those automatic massage functions. Press and hold the button for three seconds to turn off the armrest lamp; operate it again to turn it on
	Voice control and wake-up button: Short press to enable the voice control function, long press 3 seconds to turn on or off the voice control function.
	Heat treatment key: Click the key to enable or disable the heat treatment function.
	Air pressure key: Turn on/off air pressure massage function.
	Legrest up button: Pull the button to make the legrest rise slowly. Release it to stop such action.
	Legrest down button: Press the button to make the legrest move downward slowly. Release it to stop such action.
	Zero-gravity key I : the positions of the legrest and the backrest can be automatically adjusted to the positions I for zero gravity.
	Zero-gravity key II : the positions of the legrest and the backrest can be automatically adjusted to the positions II for zero gravity.
	Backrest up button: the back rest keeping lifting when pressing this button, and black rest stopped lifting once release the button.
	Backrest down button: the back rest keeping reclining when pressing this button, and black rest stopped reclining once release the button

Method of Usage

IV. Voice Control Instruction

- When the massage chair is turned on or in standby mode, the sound "Hi Alice" or "Hey Alice" will be produced to enable the voice control function. Alternatively, you can press the voice control button on the right armrest to enable the voice control function.
- Long press 3 seconds to turn on or off the voice control function.
- After such function is enabled successfully, the massage chair will reply, "I am here." Please enter your desired action within 6 seconds. After the massage chair responds, you can achieve the massage mode you want; if not, the voice control function will automatically turn off.
- Note: Please use English when the voice control function wakes up. The speech rate is moderate; Voice commands should follow up the Voice entry.

Voice Control Entry		
Entry: "Hi Alice" or "Hey Alice". Answer: I am here.		
No.	Voice control entry	Answer entry
1	Massage on	Answer: Ok, massage on
2	Massage close	Answer: Ok, massage close
3	Comfort Massage	Answer: Ok, comfort massage
4	Relax massage	Answer: Ok, relax massage
5	Full body massage	Answer: Ok, full body massage
6	Neck and shoulder massage	Answer: Ok, neck and shoulder massage
7	Back and waist massage	Answer: Ok, back and waist massage
8	Stretch massage	Answer: Ok, stretch massage
9	Open the air pressure	Answer: Ok, open the air pressure
10	Close the air pressure	Answer: Ok, close the air pressure
11	Up the seat position	Answer: Ok, up the seat position
12	Down the seat position	Answer: Ok, down the seat position
13	Change the other mode	Answer: Ok, change the other mode
14	Go little down	Answer: Ok, go little down
15	Go little up	Answer: Ok, go little up

Note: commands 14 and 15 can only be used after command 13.

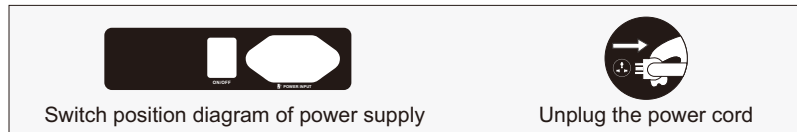
Method of Usage

V. Operation Instructions for Bluetooth Speaker Play

1. Enter the smart device main menu. Open "Settings" and select the "Bluetooth" option. Open "Bluetooth", and Bluetooth will automatically "Search for a New Bluetooth Device".
2. The smart device will search for the corresponding Bluetooth model (e.g. IMCM-XXXX). Click the "Match" button. If you are asked whether to match with the device, you just select "Match" to complete matching.
3. Turn on "Music Player" in the smart device and select the song to play.

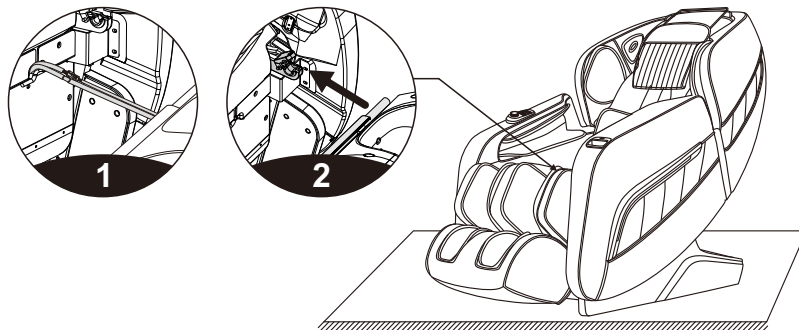
VI. Turn off the power and stop massage

- If the power button is pressed during massage, it will stop all the massage functions immediately, and the backrest, the legrest and massage chair manipulators will go back to the default positions. When the preset massage time is up, all the massage functions will be OFF. The backrest and the legrest will not go back to the default positions.
- Shut off the power supply of this product, as shown in the attached figure (Power Shut-off Diagram of the Product).



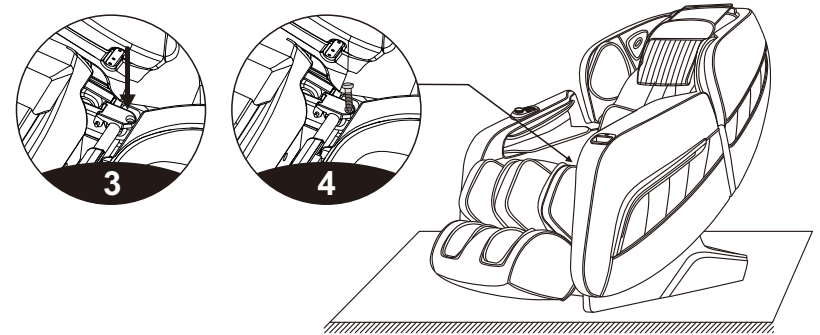
VII. Installation Instructions for Legrest

- After connecting the wires and the air hose between the legrest and the massage chair, remove the cable ties and insert the connecting part into the seat (Figure 1).
- Place the round tubes on the left and right sides of the legrest onto the legrest support (Figure 2).



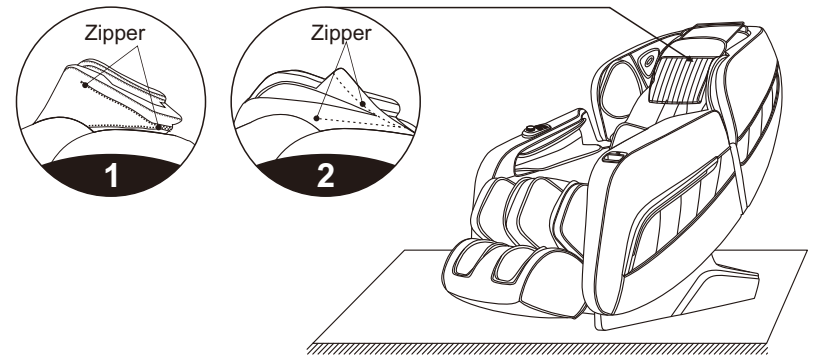
Method of Usage

- Next, flip the leg rest cover over to cover the round tubes on either side of the leg rest (Picture 3).
- Secure the leg rest to the massage chair with two M4 screws (one on each side). Check for bends in pipes, cables, wires, or other abnormalities when turning up and down. If all is well, install the leg rests (Figure 4).



VIII. Instructions for Removal and Use of Head Cushion and Backrest

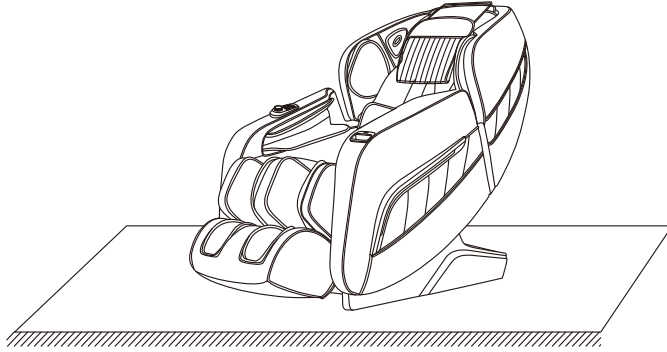
- The headrest reduces the intensity of the neck and shoulder kneading massage. You can decide whether to use a headrest (recommended) according to your own needs. The backrest and the cushion are connected by a zipper (1). The headrest and backrest are connected by a zipper (2).



Method of Usage

IX. Floor Protection

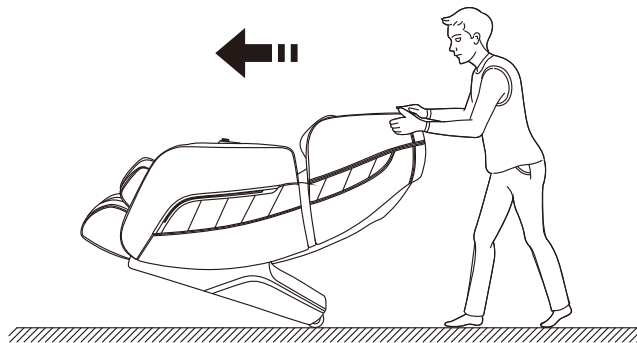
- The prolonged heavy pressure on the massage chair may cause scratches on the floor. Thus, put a carpet or cushion on the floor where the massage chair is placed to avoid this damage.



Note: Do not move the massage chair with its wheels on the rough ground or in a narrow space. At least two persons are required to lift it. During lifting, take the legrest sealing plate and backrest cover grooves as the acting points. (Do not lift the armrest directly.)

X. Instruction for Movement

- Make sure all wires are pulled away from the surface of the massage chair and press down the backrest to an angle (center of gravity on the wheels); you can push the chair forward, move it to the position you want and then return to standard pitch. (Note: During movement, you must turn off the power button first and then unplug the power cord and the remote controller connection wire.)



Warning: The rear moving wheels of the massage chair are only suitable for a short distance and slow movement. Please use other auxiliary moving tools for long-distance transportation to move this massage chair!

Legal notices

FCC Information

- Any changes or modifications not expressly approved by the party responsible for compliance could void the user's authority to operate the equipment.
- This device complies with Part 15 of the FCC Rules. Operation is subject to the following two conditions:
 - (1) this device may not cause harmful interference, and
 - (2) this device must accept any interference received, including interference that may cause undesired operation.
- This equipment has been tested and found to comply with the limits for a Class B digital device, pursuant to Part 15 of the FCC Rules. These limits are designed to provide reasonable protection against harmful interference in a residential installation. This equipment generates, uses, and can radiate radio frequency energy, and if not installed and used in accordance with the instructions, may cause harmful interference to radio communications. However, there is no guarantee that interference will not occur in a particular installation. If this equipment does cause harmful interference to radio or television reception, which can be determined by turning the equipment off and on, the user is encouraged to try to correct the interference by one or more of the following measures:
 - Reorient or relocate the receiving antenna.
 - Increase the separation between the equipment and receiver.
 - Connect the equipment into an outlet on a circuit different from that to which the receiver is connected.
 - Consult the dealer or an experienced radio/TV technician for help.

This equipment complies with FCC radiation exposure limits set forth for an uncontrolled environment. This equipment should be installed and operated with a minimum distance of 20cm between the radiator & your body. This transmitter must not be co-located or operating in conjunction with any other antenna or transmitter.

Product Specification

Model: A306

Configure: 48

Name: Massage Chair

Rated voltage: 110-120V~ 60Hz
220-240V~ 50Hz/60Hz

Rated power: 150W

Rated time: 20Min

Safety structure: Class I

Material description: PVC, PA, steel parts, electric and electron components

MATERIAL	PU	LEATHER	CLOTH	WOOD