

MASSAGE CHAIR
MODEL:A696
User Manual

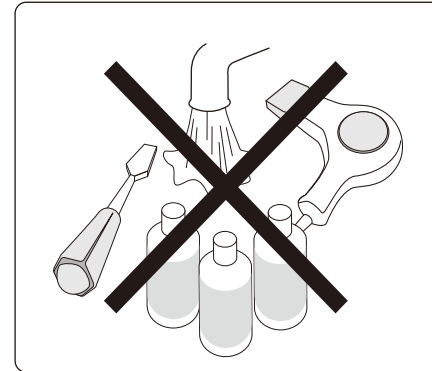
CONTENTS

Please read and follow all safety and operating instructions listed in this user manual prior to use. Basic precautions should always be used when operating.

Safety Instructions	-----2-3
Product Specifications	-----4
Product Components	-----5-6
Chair Installation	-----7-11
Before Use	-----12
Remote Controller	-----13-14
Operation Guide	-----15-24
Trouble Shooting	-----25
Maintenance	-----26

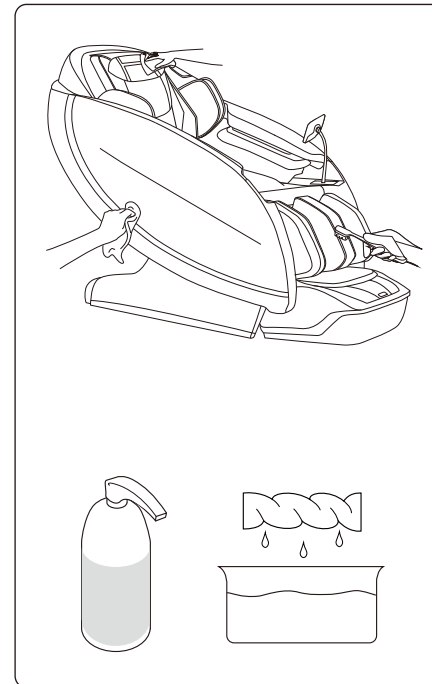
Note: Our company reserves the right to revise the design and description of this product without any further notice.

MAINTENANCE



- Turn OFF and pull out the power plug before clean the massage chair, do not touch the power plug with wet hands.

- Use dry cloth to wipe and sweat and other besmirch.



- Please use neutral wash to wipe and lightly brush the chair.

- Please airing.

- Do not use water to clean the chair.

- Do not use alcohol, benzene wash and etc.

TROUBLE SHOOTING

If the sounds or movements are not normal, please turn off the massage chair and remove the plug from the electric outlet. Please contact the customer service department for further assistance.

Problem	Solution
The massage chair is connected to power but is not functioning.	<ol style="list-style-type: none"> 1. Check to see if the power plug is inserted properly or if the power outlet is functioning properly. 2. Check to see if the main power switch is in the "I" position.
The remote controller is responding, but the massage chair is not functioning.	The massage chair may have automatically shut down due to overheating protection devices. Please turn off the power and allow the chair to cool off for 30-50 minutes.
Both the remote controller and massage chair are not responding.	The massage chair automatically turns into "full stop" or into "idle" mode when a massage program is completed. Please press the power button again to turn on the chair.

SAFETY INSTRUCTIONS

Warning

The power plug must insert properly to the power outlet. If the connection of power plug is not connected properly it can result the risk of electric shock. Do not modify the power plug provided with the product. If the outlet is not suitable. Please make sure that the power outlet is properly installed by a qualified electrician. When using the massage chair, basis precautions should always be followed to reduce the risk of electric shock.

1. Please ensure that you plug the massage chair into a proper electrical outlet.
2. Make sure the power plug is securely inserted into the proper electrical outlet to reduce the risk of short-circuit and fire.
3. Always unplug the massage chair from the electrical outlet immediately after use and before cleaning.
4. Do not use the massage chair in places where the humidity is high.
5. Do not use the massage chair outdoors and avoid place with direct sunlight.
6. If the power goes off during use, be sure to turn the power switch to the off position and pull the power plug out from the socket to prevent damage from occurring when the power is restored.
7. Never operate the massage chair if the power cord is wet or damaged.
8. Never plug/unplug the power cord from the socket with wet hands.
9. Close and continuous supervision is necessary when this appliance is being used by on or near children, invalid or disabled person.
10. Use this appliance only for its intended use as described in this use manual.
11. Do not use any parts not from factory.
12. Do not stand, sit or jump in the calves rest when masage chair is in use to prevent any injury to person.
13. Do not attempt to stand on the backrest and armrest to prevent any injury to person.
14. Be careful not to fall asleep during the massage session.
15. Always keep the massage chair clean and never insert any object into the gaps on and around the massage chair.
16. Do not move the massage chair by pulling the power supply cord.
17. Always check whether the surface of the massage chair is torn or ripped before usage, if you found any unfamiliar rips in any area of the cloth in the backrest, do not use the massage chair, kindly contact the service centre immediately for repair.
18. This appliance is designed for household use only.
19. For those suffering from illnesses, please consult your doctor for advice prior to use.

SAFETY INSTRUCTIONS

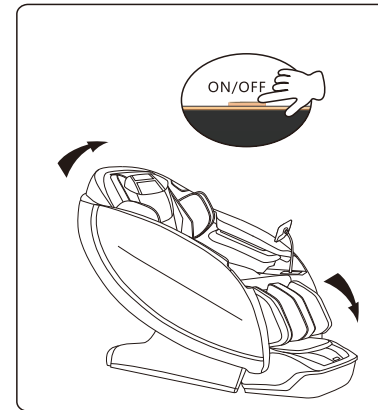
20. The following persons are requested to consult a doctor prior to use in order to reduce the risk of user feeling sick or suffering from injury
- Those who have malignant tumor
 - Those who suffer from heart disease
 - Those who are experiencing pregnancy, menstruation and puerperal fever
 - Those who require complete rest
 - Those who are under medical treatment
 - Those who suffer from back problem or whose backbone is abnormal or bent
 - Those who have osteoporosis
21. If you experience pain during usage, stop using the massage chair immediately, if any injuries occur, seek medical treatment immediately.
22. Never massage the swollen or inflamed parts of the body.
23. This product is non-professional appliance designed to provide a comfortable massage. do not use this product as substitute for medical treatment.
24. Each massage session should not exceed 30 minutes. massage the targeted area only for 15mins, over-massaging can lead to overheating , thus giving the appliance a shorter lifespan.
25. Do not operate where aerosol(spray) product are used or where oxygen is being administered.
26. The massage chair is not suitable for children aged 14 and below.

NOTE:

- This appliance is not intended for use by persons(including children) with reduced physical sensory or mental capabilities, or lack of experience and knowledge, unless they have been given supervision or instruction concerning use of the appliance by a person responsible for their safety.
- If the supply cord is damaged,it must be replaced by manufacturer,its service agent or similarly qualified persons in order to avoid a hazard.
- The appliance heats up during operation. persons sensitive to heat must take extra caution when using the appliance.

OPERATION GUIDE

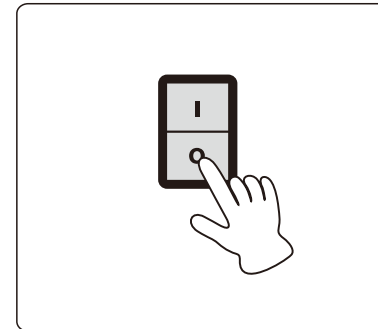
10. After use



- 1) Press the power button to power off the massage chair.

*Make sure whether there are no barriers around the massage chair.

- 2) Get up when massage chair rest to initial state



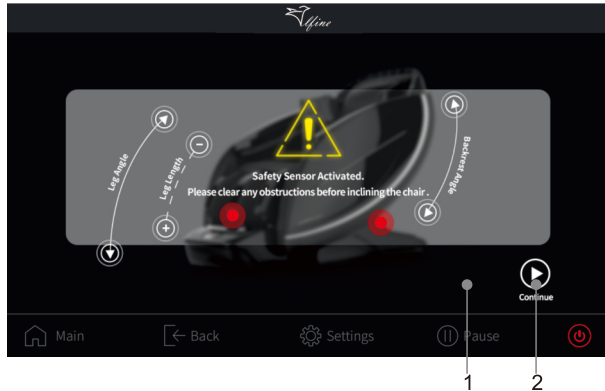
- 3) Turn off the main power switch.

- 4) Remove plug from power outlet.

- * Please do not pull on the power cord to remove the plug.
- * Please do not unplug with wet hands.

OPERATION GUIDE

8. Anti-pinch



1. The massage chair stopped running
2. The massage continues

9. The method of playing the bluetooth music in massage chair:

A: Match: Open the bluetooth function in mobile phone or Ipad, and search nearby. Choose the massage chair bluetooth function music equipment and match with it.

B: Play music: After matching with it, you can display the music by mobile or APP music display software.

Attention:

Please off the bluetooth connection when not in use so as for other devices to connect smoothly.

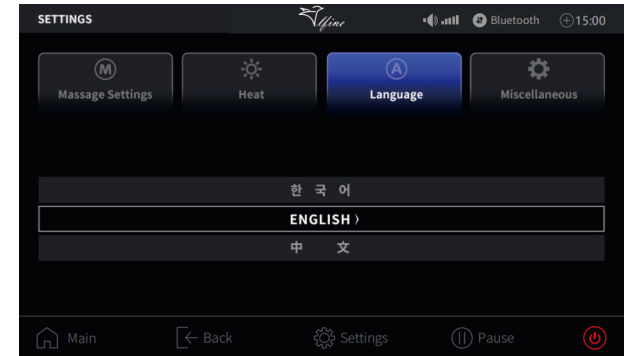
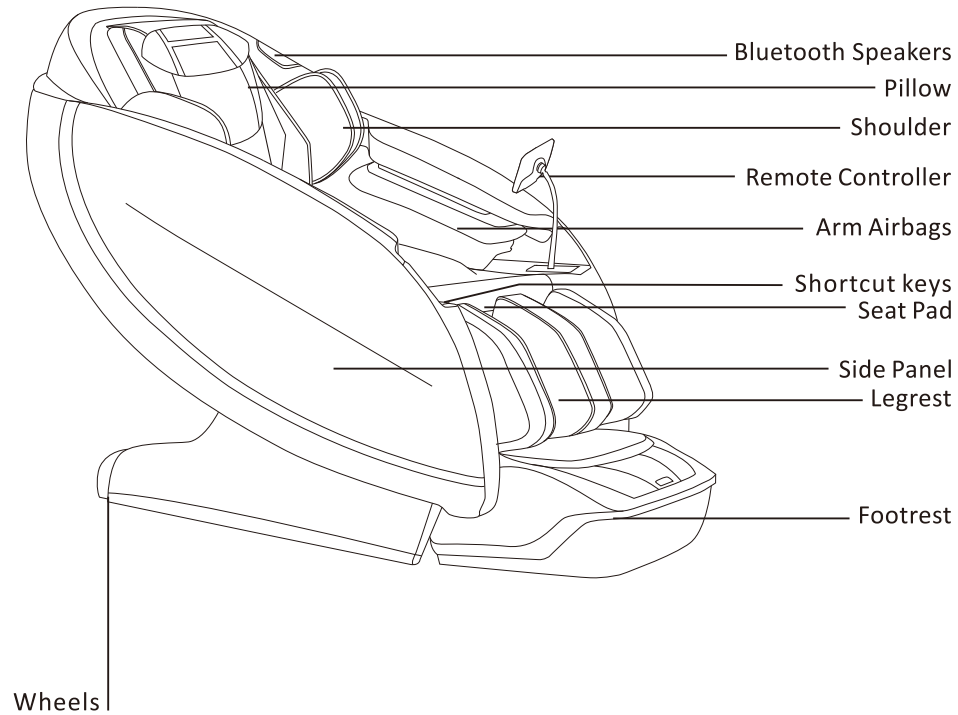
Please note that bluetooth cannot connect to play external device music during auto programs (except for the Bluetooth program in music sync) or manual programs. Bluetooth can connect during massage pause period, the Bluetooth connection will be off automatically once massage continue.

PRODUCT SPECIFICATIONS

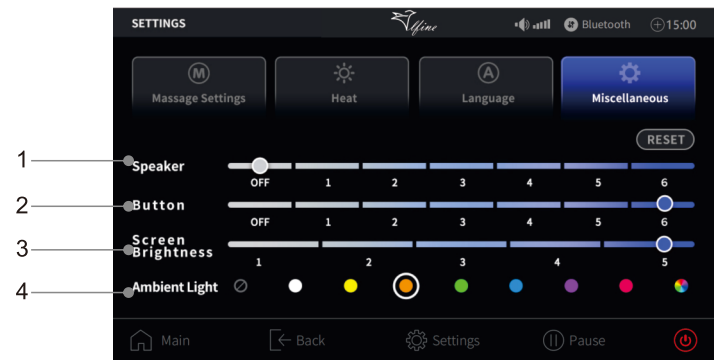
Description	Specifications
Product Name	Massage Chair
Model No.	A696
Configure	01
Rated Voltage	110V~
Rated Frequency	60Hz
Rated Power Consumption	312W
Product Dimension (LxWxH)	1610x830x1200mm
Product Weight	149kg

PRODUCT COMPONENTS

Main Body Diagram



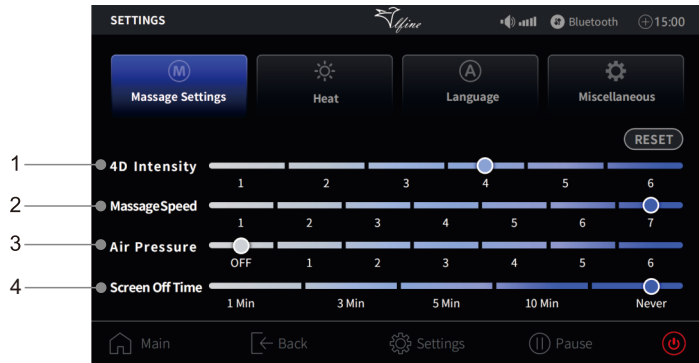
2 languages are available to choose: Korean, English, Chinese



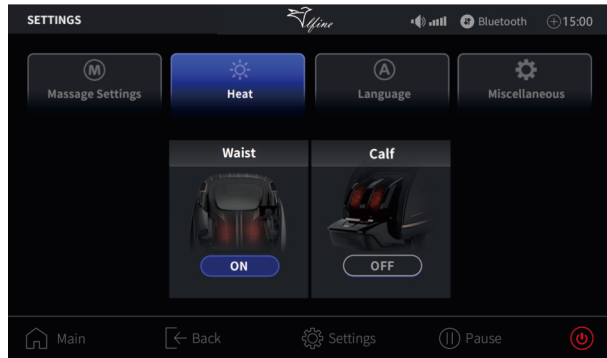
1. Speaker volume adjustment 2. Button volume adjustment
 3. Screen brightness adjustment 4. Ambient light selection

OPERATION GUIDE

7.Setting



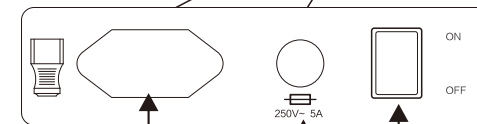
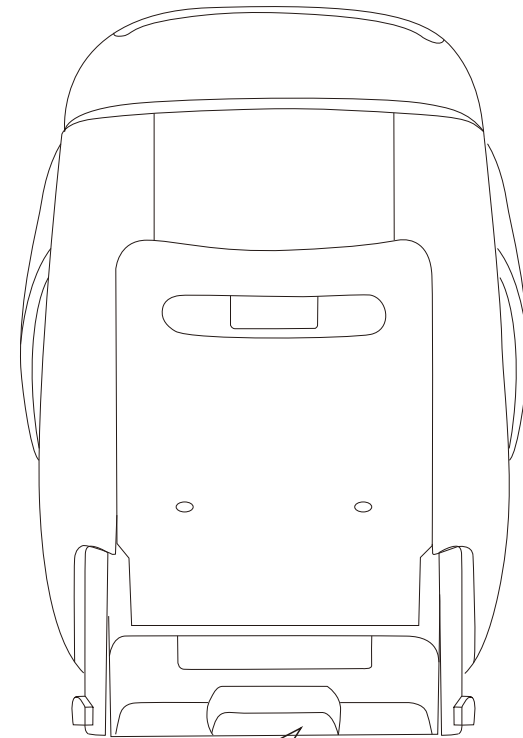
1.4D Intensity selection 2.Massage Speed selection 3.Air Pressure selection 4.Screen Off Time selection



Turn on/off the heating selection interface

PRODUCT COMPONENTS

Main Body Diagram



Power Cord Socket

Safety Fuse

Main Power Switch

1.The screws and accessories used in the installation process are shown below



No. 1 screw x2



No. 2 screw x4



No. 3 buckle x2



No. 5 screw + washer x2

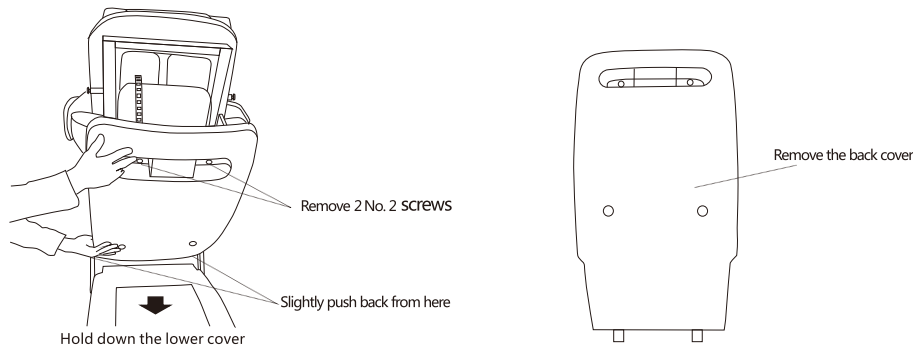


No. 6 screw x8

2. Remove the back cover as shown.

(1) Remove the 2 No. 2 screws on the back cover.

(2) Hold down the lower cover, and push back slightly from the lower end of the back cover to remove it.



3.Assemble the left and right side plate components: as shown below.

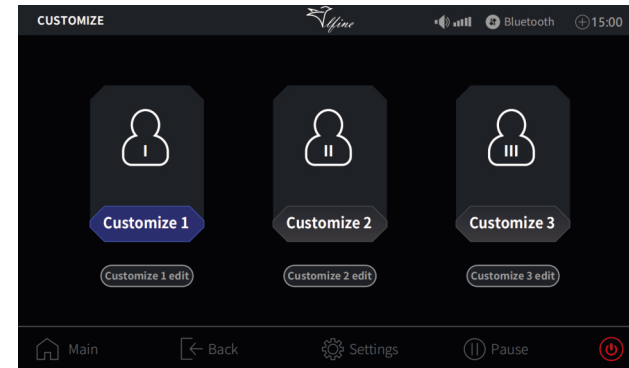
(1) Hang the side plate onto the iron frame of the main body, align the side plate fixings (as shown in No 2) to the hook on the main body, and push forward slightly to make the hook on the main body snap into the following figure.

(2) Side plate fixings after the fixing is completed, match & join all connections firmly .

(3) Fix the side plate with No. 5 screws.

(4) The same applies to the other side panel.

6.Customize



1. Click customize 1, customize 2 or customize 3 to perform massage (can only be selected if the massage content has been customized and saved before)

2.Click customize 1、 customize 2 or customize 3 Setting to enter the Custom Setting interface, then select the preferred massage technique whose icon will be highlighted after selection, and select the massage interval, 4D intensity, air massage, massage width, massage speed, air intensity, back heating, calf kneading and other functions, then click "Save" to save the current settings as Customized I and Custom II. After the settings are saved successfully, the custom program will be immediately available and can be used for the next massage by clicking the saved custom program.

OPERATION GUIDE

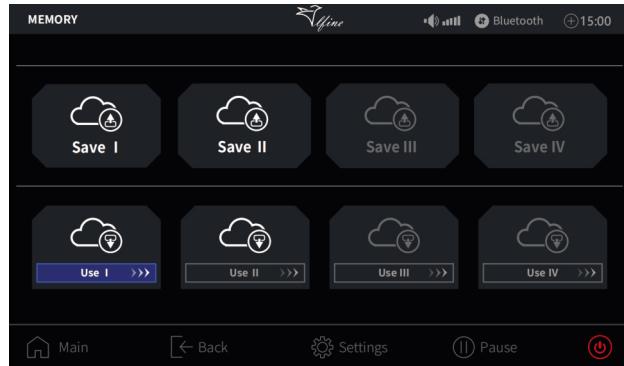
CHAIR INSTALLATION

4. Air pressure



- 1. Air bag position selection
- 2. Air strength adjust
- 3. Calf roller strength adjust
- 4. Foot roller strength adjust
- 5. Zero G position selection

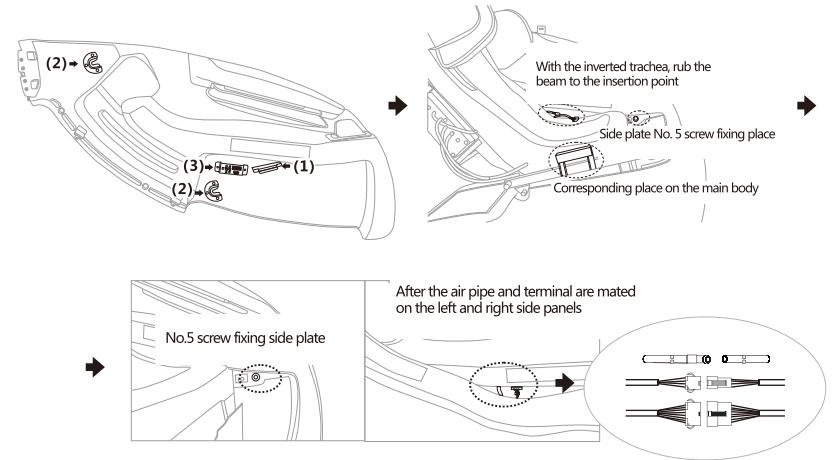
5. Memory



Storage: Saving the currently running massage program, including automatic program, massage technique, air mode and intensity, position and angle of leg unit and backrest unit, and other massage functions.

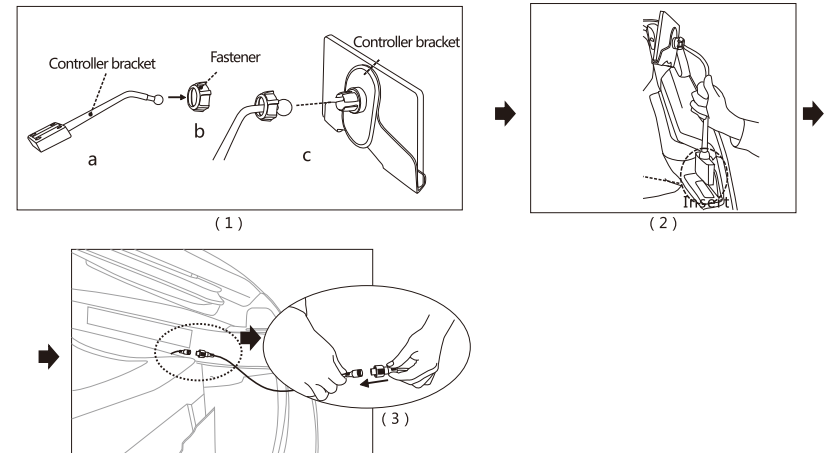


Call: Calling the previously saved massage program, including automatic program, massage technique, air mode and intensity, position and angle of leg unit and backrest unit, and other massage functions.



4. Remote controller installation.

- (1) Insert the bracket into the fastener, push into the circular groove of the controller bracket, and then tighten the fastener (Figure 1).
- (2) Push the controller bracket into the left slot of the massage chair (Figure 2).
- (3) Finally, join the connection between remote controller and massage chair (Figure 3).

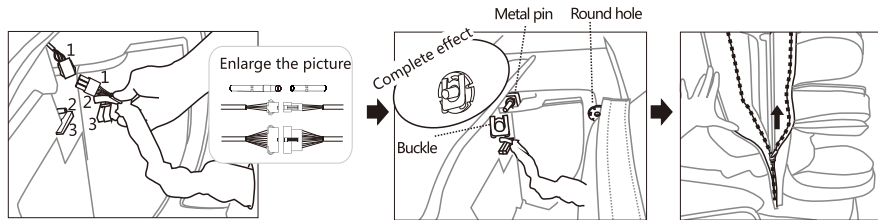


CHAIR INSTALLATION

OPERATION GUIDE

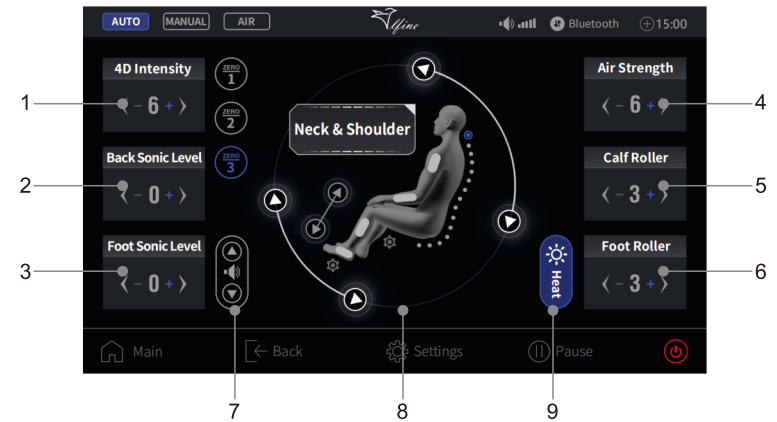
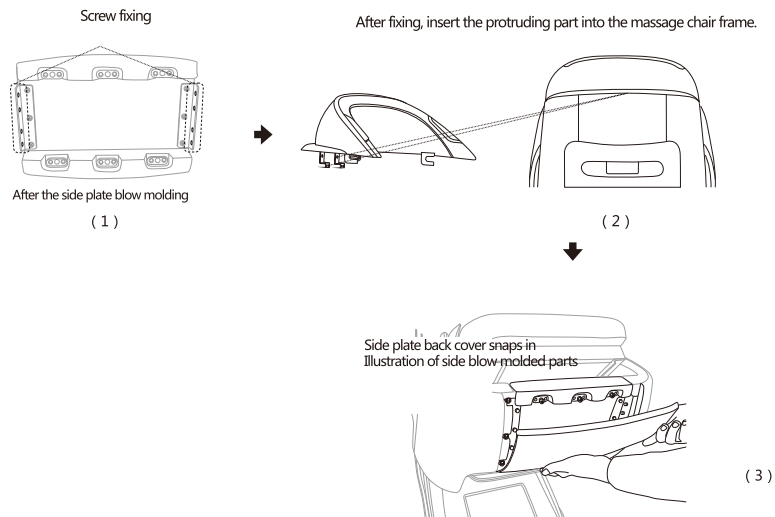
5. Legrest installation.

- (1) First connect the connections to the massage chair as shown below.
- (2) Raise the legrest, insert the round hole of the legrest into the metal pin of the massage chair. Then, fix the buckle as shown below. Ensure to follow the same steps for both sides of legrest.
- (3) Pull the zip along the legrest and seat of the massage chair.



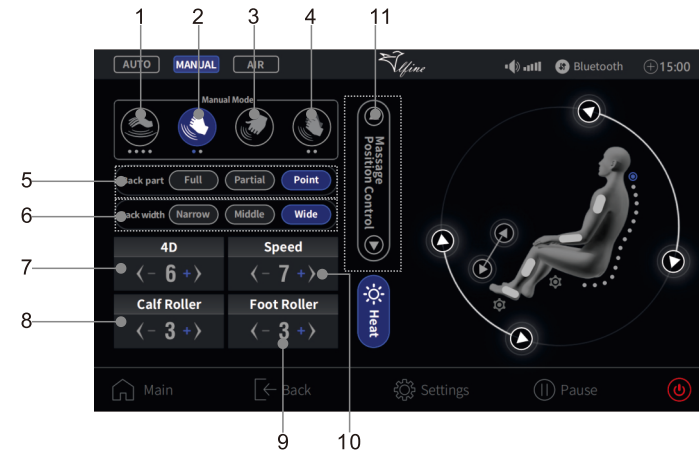
6. Installation of blow moldings plate :

- (1) Please ensure that the direction is correct during installation (as shown in figure1).
- (2) Please see the eighth installation step (Please see the eighth step to install the hood).
- (3) Please tap to make the back cover of the side plate snap into the side plate and blow moldings plate(as shown in figure3).



- 1.4D strength adjust
- 2.Back sonic strength adjust
3. Foot sonic strength adjust
- 4.Air strength adjust
- 5.Calf roller strength adjust
- 6.Foot roller strength adjust
- 7.Speaker volume adjust
- 8.Massage indication
- 9.Heating on/off

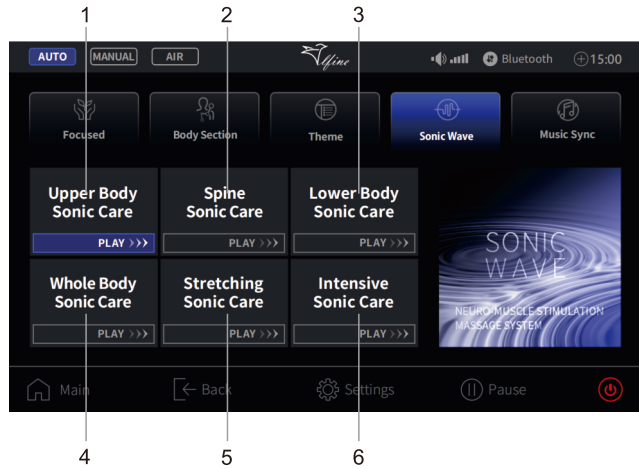
3.Manual massage



- 1.Kneading(4 massage mode)
- 2.Tapping(2 massage mode)
- 3.Acupressure
- 4.Clapping(2 massage mode)
- 5.Massage coverage(part):full, partial , point
- 6.3 width setting:wide, middle and narrow
- 7.4D strength adjust
- 8.Calf roller strength adjust
- 9.Foot roller strength adjust
- 10.Massage speed adjust
11. Massage position adjust

OPERATION GUIDE

•Sonic Wave



- 1.Upper Body Sonic Care 2.Spine Sonic Care 3.Lower Body Sonic Care
4.Whole Body Sonic Care 5.Stretching Sonic Care 6.Intensive Sonic Care

•Music Sync

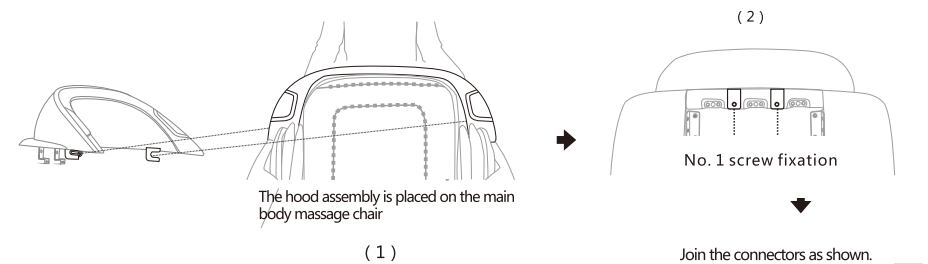


- 1.Bijarim 2.Shinrin-yoku 3.Nature bliss 4.Romance 5.Land of bliss
6.Bluetooth

CHAIR INSTALLATION

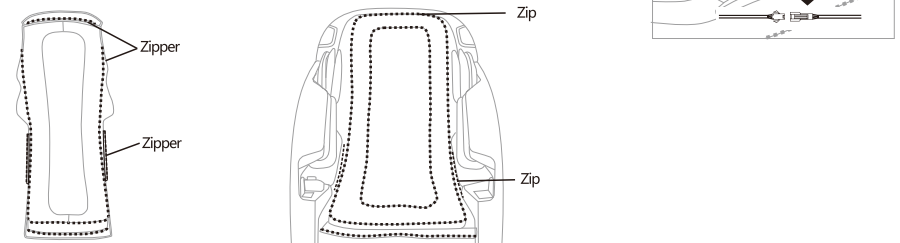
7.Head part installation:

- (1) put the sheet metal on both sides of the hood into the plastic parts of the side plate (as shown in figure1).
- (2) Fix the sheet metal part at the back of the hood with No.1 screws (as shown in figure2).
- (3) Then connect the wire harness terminals on both sides of the hood (1 each on the left and right), and then hide the docked wire harness into the elastic cloth sleeve.



8. Upholsterly installatic ...

- (1) Pull the zip as shown below (dotted lines).
- (2) Finally, zip up the zipper on the backrest leather cover and the zipper on the side panel leather cover.

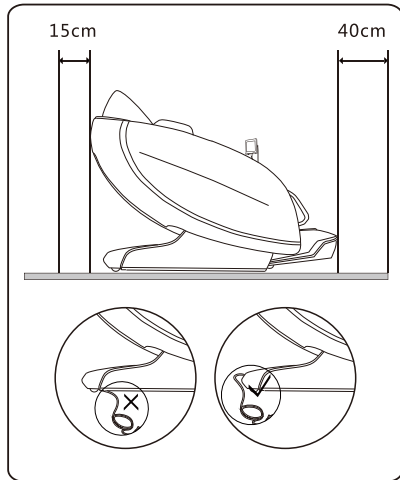


9.Install the back cover as shown below.

- (1) Pat the back cover to the body, and make sure that the buckle on the back cover is fully inserted into the body of the massage chair.
- (2) Tighten the four No. 2 screws on the back cover.



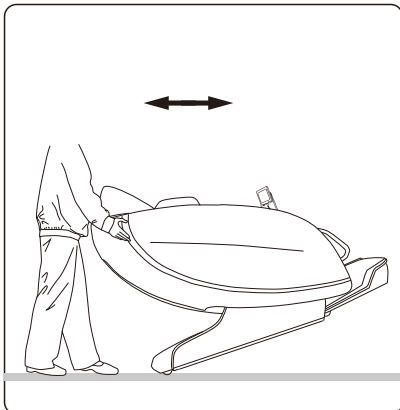
3. Place the massage chair in an open area



- Allow sufficient space around the chair for recline purposes.
15cm distance for the back side and 40cm in front of the footrest.

- *In order to avoid the damage of the floor and to reduce the noise, please put area rug under the massage chair.
- *Make sure that there are no barriers in front and the back of the massage chair.
- *Please do not put it in wet or uneven floor.
- *To avoid signal interference, please place it 4 feet away from AV,TV, and radio.

4. Moving the massage chair

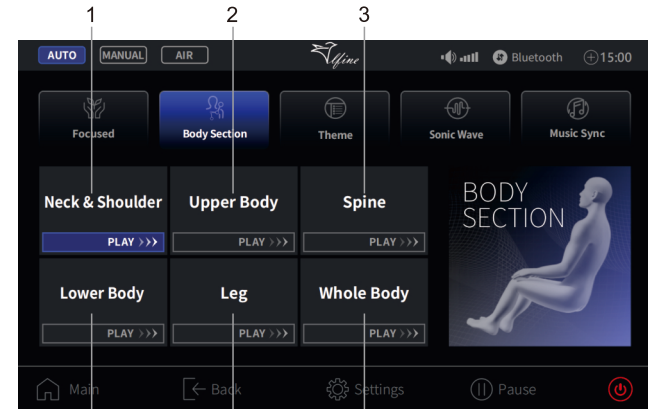


As illustrated, push the backrest downwards and tilt the chair into its wheels at a 45° angle. Slowly push and maneuver the massage chair to the desired location. Lower the chair slowly and smoothly until it is fully flat on the ground.

CAUTION:

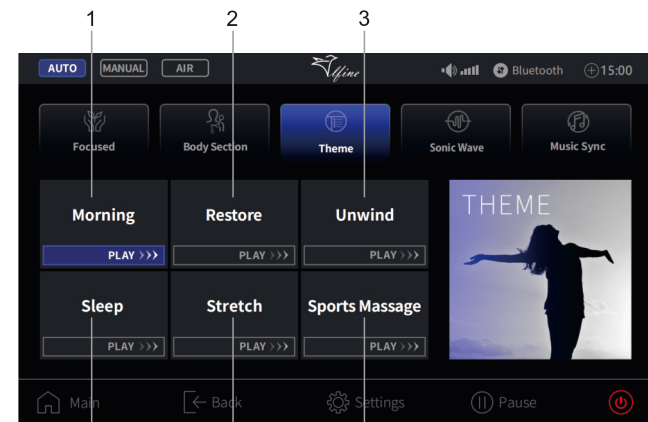
- *Do not move massage chair when occupied or in use.
- *Moving the massage chair may cause damage to the floors. Floor protection is recommended (e.g. rugs or carpet).
- *Do not drop or suddenly let go of the chair when moving as it may damage the chair.

•Body Section



- 1.Neck&Shoulder
- 2.Upper Body
- 3.Spine
- 4.Lower Body
- 5.Leg
- 6.Whole Body

•Theme



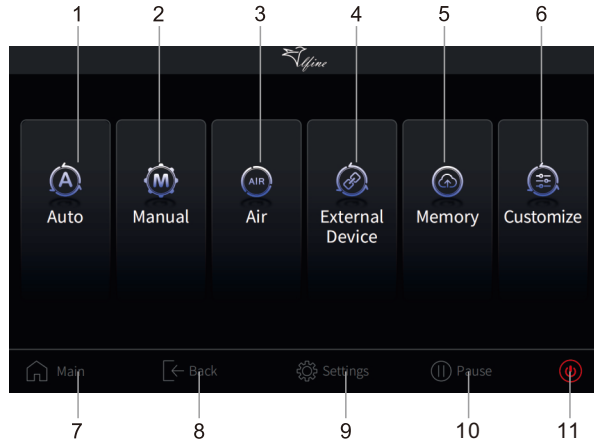
- 1.Morning
- 2.Restore
- 3.Unwind
- 4.Sleep
- 5.Stretch
- 6.Sport Massage

OPERATION GUIDE

BEFORE USE

1. Remote controller interface and description

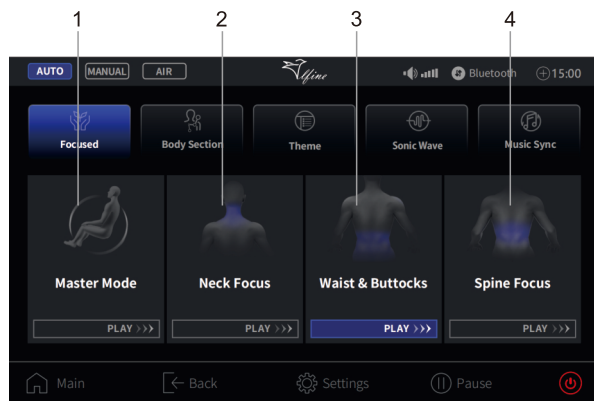
- Open the remote controller and the main menu will be displayed. Please select the program you want.



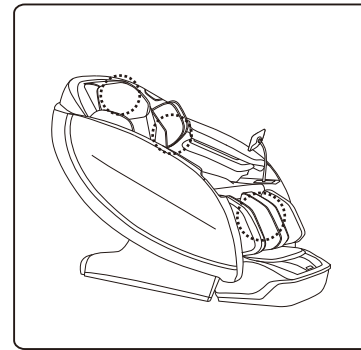
1.Auto 2.Manual 3.Air 4.External Device 5.Memory
6.Customize 7.Main 8.Back 9.Puse 10.Settings
11.Power off

2. Auto modes

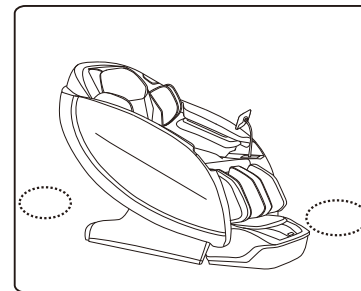
- Focused



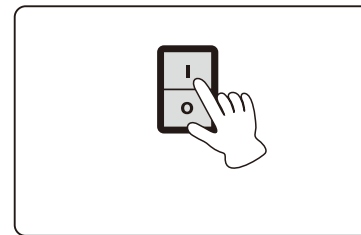
1.Master Mode 2.Neck Focus 3.Waist&Buttocks 4.Spine Focus



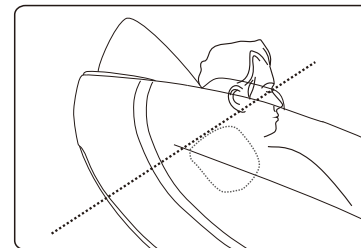
- 1. Make sure the product is in good condition and proper working order.**
 - Check the headrest and backrest pad.
 - Inspect the power plug.
 - Make sure the footrest is in its upright original position in order to prevent damage.



- 2. Check the surrounding environment**
 - Ensure there are no people, pets, or objects obstructing the massage chair.



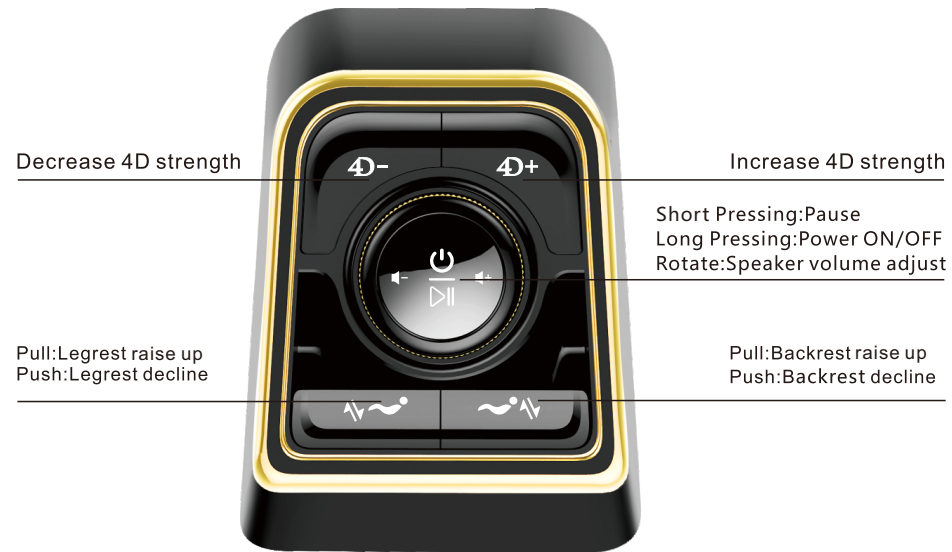
- 3. Plug in the massage chair power cord.**
 - Connect the power cord.
 - Turn ON the power switch on the back of the massage chair.



- 4. Adjust the position of the headrest.**
 - Adjust the headrest until it is in a comfortable position.

REMOTE CONTROLLER

Shortcut keys



REMOTE CONTROLLER

Remote Controller

